

North Staffordshire National Trust Association

Newsletter No. 107
Summer 2017

www.northstaffsnt.org.uk



Enjoying a well earned lunch after the Swynnerton walk.

Arrangements for Trips

Coaches depart promptly from School Street alongside the long-stay pay-and-display car park, and we do not pick up members en route.

Please send a separate cheque, with the event name on the reverse, and a stamped addressed envelope for each event applied for, even if it is with the same organiser. People wishing to sit together should complete one form.

Non-members travelling as members' guests pay an extra £2 for Coach Outings and £1 for car trips. If circumstances dictate they have lower priority booking.

Please make cheques payable to "North Staffs National Trust Association". Cheques are normally not cleared until after an event. We will give notice if we need to do otherwise.

Refunds on cancellation are possible only if there is a waiting list. Please do not find your own substitute travellers: people on the waiting list have priority.

The Committee reserves the right to cancel any event that is not viable.

The personal accident insurance arranged by the Association through the Trust does NOT cover members over 80 years of age. However, our public liability insurance covers members at any age.

Whilst participating in an event please make sure that you carry the organiser's mobile phone number from the booking acceptance form in case you get lost. Please DO NOT MAKE alternative arrangements to get home without first telling the trip organiser.

This Newsletter is published by North Staffordshire National Trust Association to provide members with information on the forthcoming programme, reports on recent events, and other membership issues. The text and images are copyright and may not be reproduced without the owner's permission. Any views expressed by individual contributors are their own and not necessarily of the NSNTA or the NT.

We are always delighted to welcome new members. **Note:** you must first be a member of the National Trust or a National Trust Volunteer. To join the Association, please see the details and complete the Application Form on Page 22, or download the membership form from www.northstaffsnt.org.uk.

Copy and correspondence for the next issue, due for publication in August, should be addressed to Newsletter@jspriggs.com (01782 791360) by the **15th July 2017** at the latest (but earlier if possible!)

Printed by Colourimage Printers, High Wycombe (01494 52999) colourimage@aol.com

North Staffordshire National Trust Association

Newsletter No. 107 Summer 2017 Programme

A Note From The Chair



Once again Jane and her inventive team have done us proud and I usually take this opportunity to mention features in the programme. However, this time I want to cast more light on what is done with the funds raised by these events.

Every year the Regional Offices publish 'wish-lists' of help that the managers of properties would like. We also appreciate suggestions from members about fund-raising schemes beyond our local priority area. As Chair, I condense these wish-lists and present the Committee with options they might like to consider, having been advised by the Treasurer

that these items can be supported in our financial circumstances.

Recently we have sent £400 to Biddulph Grange for equipment to monitor humidity for fragile exhibits. £1,500 has gone to Little Moreton Hall for the repair of lime ash floors and drugging to save wear and tear on other floors. Downs Banks needed £1000 for pedestrian gates. If you go to Greyfriars in Worcester you will see why they appreciated £500 for clock maintenance. Shugborough has always lacked somewhere to exhibit unseen treasures from the library so we contributed £500, half the cost of a display bookcase.

Further afield, Dyrham Park in Gloucestershire is a beautiful house of a special period but needing extensive repair. Do go and see where the £1,100 you contributed has been spent. Be careful, it's mostly on the roof!

Best wishes

Ralph

Forthcoming Events

NB More applicants required to make the **Bristol holiday** viable –See pages 11-13.
Non-members welcome! Please book a.s.a.p. so we can confirm numbers.

Tuesday 16th May: AGM and Talk: Gaye Blake-Roberts

THIRTY-SEVENTH ANNUAL GENERAL MEETING
NORTH STAFFS CONFERENCE CENTRE
HARTSHILL

TUESDAY MAY 16th 2017 at 7.00PM

AGENDA

1. Apologies for absence
2. Chairman's Opening Remarks
3. Approval of Minutes of the 36th AGM
4. Secretary's Report - Matters Arising
5. Treasurer's Report - Matters Arising
6. Setting of Subscription Level for 2017 – 2018
7. Approvals for re-election to committee *
8. Nominations for Officers and Committee **
9. Election of Officers and Committee for 2017 – 2018
10. Any Other Business

7.30pm approx: We will invite our guest, Gaye Blake-Roberts, director of the Wedgwood Museum, to entertain and inform us with her talk on “Josiah Wedgwood – Potter, Pioneer and Philanthropist”

The evening will finish as usual with tea/coffee and biscuits, or wine from the bar - all available to purchase on the night.

* Under our constitution, committee members should normally stand down after 5 years. Richard Adams, Roger Cartlidge, Madeleine Hopley and Rose Wheat have served 5 years or more, and wish to continue in post. They therefore require the approval of the AGM to stand for re-election this year

** Members will be invited to submit nominations for the Committee and Officers (Chairman, Vice-Chairman, Secretary and Treasurer). Each nomination should be signed by the proposer, a seconder and the nominee, all of whom must be paid-up members of the Association. If possible, please send nominations in advance of the meeting to Richard Adams, Secretary, Gables End, Holly Bank, Stoke-on-Trent ST4 8FT.

Thursday 18th May: Local History Walk Around Stafford.

In 1870 an assize judge declared that Stafford was 'the most stinking town I was ever in in my life' - not a quote you are likely to see on the wall of the local tourist office! Yet Stafford has a remarkable history and retains some fabulous buildings from its past.

Join Rose Wheat on a historical walking tour of the county town and learn about its period as a Parliamentary garrison during the Civil War, outbreaks of deadly plague, the town's industrial history, political corruption in the borough, lunacy, public health and more.

We shall meet in St Mary's churchyard, near the centre of town, at 2.00pm and the walk will last approximately 90 minutes to 2 hours. You may want to treat yourselves to lunch or afternoon tea in one of the many pubs and cafes.

Cost: £5 members (£6 non members).

Please apply to Rose Wheat, 12, West Avenue, Newcastle, Staffs, ST5 0NB, telephone number 01782 616113, enclosing a Stamped addressed envelope.

EARLY BOOKING ESSENTIAL. MAXIMUM NUMBER 30.

Tuesday 23rd May: Coach Outing: Worcester - The Greyfriars, Cathedral and Elgar's Birthplace

The Greyfriars was a medieval merchant's house which dates back to 15thC. Over the years it had many uses but it fell into disrepair and would have been demolished were it not for the efforts of brother and sister, Elsie and Matley Moore, who restored it in the mid 20thC and then donated it to the National Trust in 1966. It has a delightful walled garden.

Worcester Cathedral was founded in 680, rebuilt by St. Wulstan in 1084 and was restored by the Victorians. King John and Prince Arthur, brother of Henry VIII, are both buried there. We will arrive in Worcester at 10.00am where we will divide into 2 groups. Group 2 will go to the Cathedral for tea/coffee & biscuits (included) before having an hour's guided tour on the history of the Cathedral and a visit to the royal tombs. Group 1 will take a 5 minute walk to Greyfriars where they will have refreshments before having a 40 minute guided tour in 2 groups. At around 11.30 the 2 groups will change over.

The coach will pick us up near the cathedral at 12.55. We will then drive to Elgar's Birthplace in Lower Broadheath which was recently taken over by the National Trust. You can bring a picnic to eat in the grounds or order a 'Grab 'n Go' lunch to eat in the café. Members who opt for the latter will be emailed a menu from which to choose lunch in advance of the day so that it will be ready for them on arrival. After lunch we

will have an introductory talk before being split into 3 groups; 2 groups will tour the museum whilst the third group will visit the cottage. The groups will then change over. On display are Elgar's manuscripts and musical scores whilst his music is played in the background. There is a beautiful cottage garden in which there is a lifesize bronze of the composer sitting on a bench. We leave for home at 4.30pm.

PLEASE BRING NT CARDS

Depart Newcastle at 7.45am. Return 6.30pm subject to traffic. Cost £25.00 (£27 non-members) to include refreshments on arrival and cathedral entrance and guided tour.

Please apply to Jane Mayer, 16, Shaldon Avenue, Stockton Brook, Stoke-on-Trent, ST9 9PU enclosing cheque and S.A.E. Tel 01782 533476

Grab & Go lunch: Menu will be emailed & choices to be emailed back to janemayeruk@yahoo.co.uk by 16th May.

Tuesday 6th June: Car Trip: A visit to NGS garden in Uttoxeter ST14 8BX

Those of you who came to our talk last April will remember the slides of the beautiful garden belonging to Graham and Judy White which is open to the public in July. The Whites are opening especially for us on the evening of 6th June and the visit will also include their next door neighbours' garden. We will meet at 6.45pm at their address, 9, Woodleighton Grove, Uttoxeter, where we will have an introductory talk before being shown round the gardens. They provide homemade cake and tea or coffee (included), all proceeds from which they donate to the National Gardens Scheme charity which provides home nursing care. Please indicate on the booking form if you want gluten free cake.

Directions:

If driving along the A50 leave at the McDonald's roundabout (signposted Ashbourne) and at the next roundabout take the second exit onto A518 (Uttoxeter) then after 1½ miles take B5017 (Marchington). Go over Town Bridge, take first right at roundabout then after 100 yards take third right at mini roundabout into Highwood road. After 400 yards turn right onto Woodleighton Road then left into Woodleighton Grove. Park here or on Kingfisher Way.

Numbers are limited to 50. Cost: £8.00 members, £9.00 non-members.

Please apply to Jane Mayer, 16 Shaldon Avenue, Stockton Brook, Stoke-on-Trent. ST9 9PU enclosing cheque and S.A.E. Tel: 01782 533476

Please indicate if gluten-free cake required.

Wednesday 21st June: Coach Outing to Papplewick Pumping Station, Nottinghamshire and the Staunton Harold Estate, Leicestershire, including Gothic Church and privately owned Jacobean Style Hall.

Leaving School Street at 8.20 a.m. Our first visit of the day is to **Papplewick Pumping Station** where we will be greeted with tea and coffee. The Pumping Station is Britain's finest ornately decorated Victorian waterworks and the only one in the Midlands to be preserved as a complete working pumping station. It was built between 1882 & 1884 to supplement the water supply for the growing city of Nottingham. There are the two massive 140hp James Watt beam pumping engines, which lifted water from a 200 foot deep well, and pumped water up to a reservoir serving parts of Nottingham. They worked for 85 years until 1969, when replaced by electric pumps. In 1975 Papplewick was opened to the public by a preservation group.

We then travel into Leicestershire to the 2,000-acre traditional country estate of Staunton Harold which is set in a beautiful landscaped area with Church, Hall, Lake and rolling wooded hills.

We arrive at the coach car park at **Staunton Harold** at 12.45.pm. All the Locations are within a 5 minute walk.

Lunch will be available on arrival before we start the tours. See below for venues.

The Church will be open and guides available from 1pm. We **all** start the Hall visit at 2.30pm.

The Holy Trinity Chapel. (NT). This was built for Sir Robert Shirley, 1st Earl Ferrers between 1653 and 1665 in Gothic style as their private chapel, it is one of the few churches built between the outbreak of the English Civil War and the Restoration period and has been little altered. It has fine oak box pews and Jacobean style panelling, painted ceilings and richly coloured Victorian stained glass. NT donation included.

Staunton Harold Hall was originally built by Robert Shirley, 1st Earl Ferrers in Jacobean style. The present Hall all was rebuilt in 1763 for Washington Shirley the 5th Earl. It is now a large 83 roomed Georgian two-storey house in red brick with stone dressings. Built in the form of a square, enclosing a quadrangle, with a suit of fine state rooms on the east and north front. In 1955 the 12th Earl gifted the church to the National Trust and put the estate up for auction. In 2003, after 50 years of institutional use, the Hall is once more the family home owned and occupied by the Blunt family.

Afternoon tea & cakes will be provided during your tour of the house.

Lunch venues

The Georgian Stable Block has now been converted into the Ferrers Centre for Arts and Crafts, also a Café. **The Peach House** Restaurant is situated in the Garden Centre which has an outside sitting area. Both these areas provide plenty of choice for lunch. Also picnic benches are available.

Cost £34. (non-members £36) Includes coach travel, driver's tip, morning tea or coffee, afternoon tea and cakes, entry to Pappelwick Pumping Station, Staunton Harold Hall. The Church is National Trust so **please bring Membership Cards**. Depart School Street at 8:20am. Return for 6:30pm. (subject to traffic)

Lunch available at own cost in the Café or the Restaurant.

Please apply to Janet Taylor, 53 Meaford Road, Barlaston, Stoke-on-Trent, ST12 9EE enclosing a cheque and SAE. Tel 01782 372727

Saturday 8th July: Guided Walk – WW1 Locations at Cannock Chase

During WW1 there were two Army training camps on Cannock Chase, each of which could accommodate 20,000 men, and by the end of the war 500,000 soldiers been trained there. There was also a military hospital, and there are other locations related to both world wars, including a Commonwealth cemetery and the principal German cemetery in Britain.

An original WW1 hut has been re-erected on the Chase to commemorate the centenary of the war, with an exhibition of WW1 memorabilia, and part of the hut is laid out as a hospital ward.

This walk will begin at 10.30 am at the Marquis Drive Visitor Centre on Cannock Chase (WS12 4PW). We will first visit the nearby WW1 hut, with about 30 mins to see the exhibits, and to meet our volunteer guides. Inside the Visitor Centre there is also information about the WW1 history of the Chase.

To reach the Marquis Drive Visitor Centre, take the A34 south from Stafford towards Cannock. About 4 miles after leaving Stafford you will reach the Pottal Pool roundabout, which is signposted. Take the first exit, turning left onto the Chase, following signs for the Military Cemeteries and other Chase locations. Continue on this road, following signs for the Visitor Centre.

After visiting the WW1 hut we will proceed by car to the site of the Rugeley Camp, and have a guided walk around the remains of the training camp, and the nearby rifle range, which will take about two and a half hours. Members are advised to wear suitable walking footwear, and to bring some light refreshments for the walk. Children and dogs are welcome (dogs not inside the hut, and to be kept on leads during the walk).

There is a café at the Visitor Centre, and a number of local pubs serve lunch – or you may wish to picnic on the Chase. You might also wish to visit other wartime locations on the Chase, or the Cannock Chase Museum in Hednesford, which covers in particular the history of coal mining on the Chase.

Cost is £5 for members, £5.50 for guests, payable in cash on arrival, or in advance by cheque. Please book your place with Peter Wilson by email to peterwilsonendon@btinternet.com, or by post (with an A4 size sae if you would like an information leaflet in advance) to Greenbank, Church Lane, Endon, Stoke-on-Trent ST9 9HF.

Numbers are limited and closing date for bookings is 9th June 2017.

Tuesday 18th July 2017: Coach Outing: Barber Institute and Winterbourne House, Birmingham.

We shall visit two interesting venues, both belonging to the University of Birmingham. Arriving at The Barber Institute of Fine Arts at approximately 10.30 we shall have coffee and biscuits before a guided tour of the collections lasting about an hour. There will be some free time before a short coach journey to Winterbourne House, a fine Arts and Crafts building, where we will have lunch. A substantial buffet of quiches, pies, salads, tea and coffee will be served in a separate room or members can take a picnic to eat in a designated area of the garden.

The house was built for John Nettlefold, of GKN engineering firm, and was a family home to three different families, then became the property of the University and was used for offices and student accommodation. It was recently restored to the original Edwardian splendour and opened to the public and the rooms tell of the family history with many interesting artefacts and photos. The house is surrounded by 7 acres of wonderful Gertrude Jekyll-inspired gardens which are beautifully tended. There are also outbuildings, a garden shop, plant sales and much more.

The coach will leave from School Street at 9.00am and depart from Winterbourne House at 5.00pm to arrive in Newcastle at approximately 6.30pm.

Cost £35 to include coach, driver's gratuity, coffee, tour, entry to Winterbourne House and lunch; non-members £37.

For those bringing a picnic the cost will be £27; non-members £29.

Please apply to: Mrs. Rose Wheat, 12 West Avenue, Newcastle ST5 ONB enclosing cheque and SAE.

Tuesday 8th August: Car Trip: Wollerton Old Hall Gardens

Many of you may have visited Wollerton Old Hall Gardens in Shropshire; if you haven't, then you are in for a treat.

To quote Sir Roy Strong, "the test of a good garden is whether it fires you up to change your own" and Wollerton Old Hall always does that in spades for me.

Designed and developed by Lesley and John Jenkins since 1984, it is set in the grounds of their beautiful 16th Century Hall. (The hall is their private home and is not open to the public.)

We will have a short introductory talk followed by a guided tour around the garden lasting approximately one hour.

Following this we will have lunch in their very attractive tea-rooms. This will consist of a summer platter of local ham or local cheese served with a selection of side salads; a choice of home-baked desserts with tea or coffee to follow.

We will meet at Wollerton at 10.30 am. Directions will be sent to you with your confirmation.

The cost is £22 which includes entry, the guided tour and lunch.

Apply to Susan Till, 14, Whitmore Road, Trentham, ST4 8AP.

Please apply by June 30th enclosing a cheque and a stamped addressed envelope.

Wednesday 23rd August: Coach Outing: Welbeck Abbey and Creswell Craggs, Notts.

This event is now fully booked, but is included here as a reminder and in case there are cancellations you may wish to apply for.

This former monastic foundation has been in the same extended family since 1607.

Being a private home, it is only open to a restricted number of visitors for 28 days a year, so we have reserved all of the tours on this day.

You will see the magnificent state rooms where each generation has collected, remodelled, and quite often entertained on a lavish scale.



© The Harley Gallery

Copious notes will be returned with the booking confirmation, but there are some points to bear in mind before posting your form.

The State Rooms Tour lasts 1½ hours. There will be no access to plumbing or anywhere else to sit down during this time! There are full facilities in our base in the cluster of buildings comprising the Farm Shop, The Harley Contemporary Art Gallery and Craft Centre, the magnificent new Portland Gallery of Treasures, Café, Notcutt's Garden Centre, Edinburgh Woollen Mill and Restaurant.

The State Rooms Tours begin at 10am, 12noon and 3pm. If you have a preference for one of these times please indicate so on the booking form, otherwise I will allocate according to application arrival.

We shall be leaving at 5.00pm so in case the cultural and retail opportunities begin to pall I am arranging a shuttlebus to Creswell Crags (admission free), where there is a nearby picnic area, café and optional tour in the prehistoric caves (£7.50 book in advance but pay on the day).

Further details of the arrangements, including special provisions for the comfort and refreshment of people on the first tour if time is pressing, will be included with the booking confirmation form.

The coach will leave School Street at 8.00 am and return about 7.00pm.

Cost: £37.50 (non-members £39.50) to include coach travel, State Rooms Tour, and driver's gratuity. Optional conducted prehistoric rock and painted caves tour: £7.50 payable on the day, but book in advance.

Please apply to Ralph White, 20 Upper Green, Tettenhall, Wolverhampton, WV6 8QH, <ralph@ralphwhitedesign.com> Tel 01902 752833, including cheque and SAE.

Advance Bookings

The following events are scheduled for the Autumn-Winter programme, but due to the advance notice needed, booking or pre-booking is required before the next Newsletter will be published.

Sunday 10th – Thursday 14th September: Holiday in Bristol - SHIPSHAPE AND BRISTOL FASHION

Staying at The Mercure Holland House Hotel & Spa, Bristol. Cost £510 per person.

***More applicants required to make this viable – non-members welcome!
Please book a.s.a.p. so we can confirm numbers.***

This five day, four night Autumn break, as outlined in our last newsletter, has been designed to offer a relaxed and friendly holiday based in Bristol, a maritime city straddling the River Avon in the southwest of England. Included is luxury coach travel throughout, the opportunity to enjoy the attractions of Bristol, journey through the lovely North Somerset countryside and explore the beautiful, medieval City of Wells, the smallest city in England sheltered beneath the southern slopes of the Mendip Hills.

The visits have been planned to minimise mobility difficulties whilst providing plenty of opportunities for those more energetic members. Sunshine would be a bonus but not essential.

We hope we have struck the balance between five days full of varied interesting experiences to suit all tastes, whilst allowing time to explore locally and to relax with friends, enjoying the 4 star facilities of our hotel.

Visits include:-

- The Royal Mint, Cardiff, where you will be able to explore the exceptional range of gold, coins and medals, and learn why our £1 coin has been replaced by the new 12 sided coin!
- Slimbridge Wetlands Centre,
- Two historic Cathedrals,
- Bishops Palace, Wells,
- Two NT Houses, Berrington Hall and Tyntesfield,
- Bristol Harbour Tour, including the SS Great Britain,
- Brunel's Clifton Suspension Bridge



Continued on page 13

Thursday 18th May: Local History Walk Around Stafford.

Cost: £5 members (£6 non-members).

Please apply to Rose Wheat, 12, West Avenue, Newcastle, Staffs, ST5 0NB, telephone number 01782 616113, enclosing a Stamped addresses envelope.

EARLY BOOKING ESSENTIAL. MAXIMUM NUMBER 30.

Tuesday 23rd May: Coach Outing: Worcester - The Greyfriars, Cathedral and Elgar's Birthplace

Depart Newcastle at 7.45am. Return 6.30pm subject to traffic. Cost £25.00 (£27 non-members) to include refreshments on arrival and cathedral entrance and guided tour.

Please apply to Jane Mayer, 16, Shaldon Avenue, Stockton Brook, Stoke-on-Trent, ST9 9PU enclosing cheque and S.A.E. Tel 01782 533476

State how many Grab & Go lunches required: Menu will be emailed & choices to be emailed back to janemayeruk@yahoo.co.uk by 16th May.

Thursday 18th May: Local History Walk Around Stafford.

Name(s) Association number Cost: £

.....
.....

Address Total

.....
.....

Telephone No. email

For booking details see reverse of this form.



Tuesday 23rd May: Coach Outing: Worcester - The Greyfriars, Cathedral and Elgar's Birthplace

Name(s) Association number Cost: £

.....
.....

Address Total

.....
.....

Telephone No. email

No. of Grab & Go lunches required:



Tuesday 6th June: Car Trip: A visit to NGS garden in Uttoxeter ST14 8BX

Numbers are limited to 50. Cost: £8.00 members, £9.00 non- members.

Please apply to Jane Mayer, 16 Shaldon Avenue, Stockton Brook, Stoke-on-Trent. ST9 9PU enclosing cheque and S.A.E. Tel: 01782 533476

Please indicate if gluten-free cake required.

Wednesday 21st June: Coach Outing to Papplewick Pumping Station, Nottinghamshire and the Staunton Harold Estate

Cost £34. (non-members £36) Includes coach travel, driver's tip, morning tea or coffee. Afternoon tea and cakes. Entry to Pappelwick Pumping Station, Staunton Harold Hall. The Church is National Trust so please bring Membership Cards. Depart School Street at 8:20am. Return for 6:30pm. (subject to traffic)

Lunch available at own cost in the Café or the Restaurant.

Please apply to Janet Taylor, 53 Meaford Road, Barlaston, Stoke-on-Trent, ST12 9EE enclosing a cheque & SAE. Tel 01782372727

Tuesday 6th June: Car Trip: A visit to NGS garden in Uttoxeter ST14 8BX

Name(s) Association number Cost: £

.....
.....

Address Total

.....
.....

Telephone No. email

No. of gluten free cakes required:

For booking details see reverse of this form.



**Wednesday 21st June: Coach Outing to Papplewick Pumping Station,
Nottinghamshire and the Staunton Harold Estate**

Name(s) Association number Cost: £

.....
.....

Address Total

.....
.....

Telephone No. email



Saturday 8th July: Guided Walk – WW1 Locations at Cannock Chase

Cost is £5 for members, £5.50 for guests, payable in cash on arrival, or in advance by cheque. Please book your place with Peter Wilson by email to peterwilsonendon@btinternet.com, or by post (with an A4 size sae if you would like an information leaflet in advance) to Greenbank, Church Lane, Endon, Stoke-on-Trent ST9 9HF.

Numbers are limited and closing date for bookings is 9th June 2017.

Tuesday 18th July 2017: Coach Outing: Barber Institute and Winterbourne House, Birmingham.

Cost £35 (non-members £37) to include coach, driver's gratuity, coffee, tour, entry to Winterbourne House and lunch.

For those bringing a picnic the cost will be £27; non-members £29.

Please apply to: Mrs. Rose Wheat, 12 West Avenue, Newcastle ST5 ONB enclosing cheque and SAE.

Please state the number of lunches required

Saturday 8th July: Guided Walk – WW1 Locations at Cannock Chase

Name(s)	Association number	Cost: £
.....
.....
Address	Total
.....	
.....	
Telephone No.	email.....	



Tuesday 18th July 2017: Coach Outing: Barber Institute and Winterbourne House, Birmingham.

Name(s)	Association number	Cost: £
.....
.....
Address	Total
.....	
.....	
Telephone No.	email	
Number of lunches required:	



Tuesday 8th August: Car Trip: Wollerton Old Hall Gardens

The cost is £22 (non-members £24) which includes entry, the guided tour and lunch.

Apply to Susan Till, 14, Whitmore Road, Trentham, ST4 8AP.

Please apply by June 30th enclosing a cheque and a stamped addressed envelope.

Thursday 28th September: Coach Outing: Charlecote Park & Stoneleigh Abbey.

Cost: £28 (£30 for non-members) to include driver's tip, welcome talk at Charlecote, tour and tea/coffee & cake at Stoneleigh.

Please apply to Richard Mayer, 16, Shaldon Ave, Stockton Brook, Stoke-on-Trent ST9 9PU enclosing cheque and SAE. For further information ring 01782 533476.

NB Cheques will be cashed mid-August.

Tuesday 8th August: Car Trip: Wollerton Old Hall Gardens

Name(s)	Association number	Cost: £
.....
.....
Address	Total
.....		
.....		
Telephone No.	email	



Thursday 28th September: Coach Outing: Charlecote Park & Stoneleigh Abbey.

Name(s)	Association number	Cost: £
.....
.....
Address	Total
.....		
.....		
Telephone No.	email	
Do you require at Charlecote	Hot lunch: Yes/No	Snack lunch: Yes/No
Numbers



Continued from Page 12



Don't forget to bring your NT cards!

4 nights/5days. Cost: £510 per person

Organisation: Shipshape and Bristol Fashion!!

Contact: Marion & Mike Lycett, Millstone House, The Green, Bagnall, Stoke-on-Trent, ST9 9JR, Tel: 01782 502919 Mob: 07481817048 for booking form (or use one from previous Newsletter)

marionlycett@hotmail.com / lycettmichael@hotmail.com

Thursday 28th September: Coach Outing: Charlecote Park & Stoneleigh Abbey.

Charlecote Park (NT) has been the home of the Lucy family for 800 years. It was remodelled in the Victorian period and this is how it is presented today. We will arrive at about 10.30am and members can buy tea in the Orangery Tea Room (own expense) before going to the house for a Welcome Talk at 11.00am; buggies are available if required. The tour of the house is self-guided but there are very knowledgeable room guides who are happy to tell visitors more about Charlecote. There are Victorian Kitchens, a Servants' Hall and Pantry shops and a Carriage House. Outside are lovely gardens including a parterre, a woodland garden and extensive grounds designed by Capability Brown in which roam a herd of fallow deer and a flock of Jacob's sheep.

You can picnic anywhere in the park and gardens and there are picnic benches on the paddock near the gatehouse. The Orangery serves hot meals and snacks. Please indicate on the booking form if you would like either of these to assist staff with the catering.

We will leave Charlecote at 1.45pm and arrive at Stoneleigh at 2.15pm.

Stoneleigh Abbey dates back to 1155 when it was built by Cistercian monks who became masters of the Coventry and Cotswold wool trade. The abbey was dissolved in 1536 and the building was stripped leaving a red sandstone roofless ruin. The abbey was sold in 1561 to Thomas Leigh, a wealthy merchant, who became Lord Mayor of London in 1558 and he led the procession at Elizabeth I's coronation. A manor house was fashioned from the ruins which was added to by successive generations. It was here that Jane Austen stayed as a guest of her cousin, Rev. Thomas Leigh, and she based Mansfield Park on the Abbey.

The grounds were landscaped by Humphrey Repton in 1809-13.

The Leighs were forced to leave after a disastrous fire in 1960 and in 1996 a Trust was formed which obtained funding from the Heritage Lottery Fund, English Heritage and the EU and a huge restoration project took place between 1996 and 2000. In 2010 work began on restoring the grounds and this is ongoing work.

At 2.30pm we will be given a guided General History tour of the Abbey after which we will have tea/coffee and cake (included).

Please bring your National Trust cards with you.

Depart School Street 8.30am. Return for 6.45pm (subject to traffic).

Cost: £28 (£30 for non-members) to include driver's tip, welcome talk at Charlecote, tour and tea/coffee & cake at Stoneleigh.

Please apply to Richard Mayer, 16, Shaldon Ave, Stockton Brook, Stoke-on-Trent ST9 9PU enclosing cheque and SAE. For further information ring 01782 533476.

NB Cheques will be cashed mid- August.

┆ ┆ ┆ ┆ ┆ ┆ ┆ ┆ ┆ ┆ ┆ ┆ ┆ ┆

Once again the Programme Organiser and those who so ably arrange these events have done a magnificent job in assembling such a varied and attractive range of activities, and our thanks go to all of them. If you have any ideas for a future trip or event – some location that impressed you that you think other members might appreciate, or some NT milestone that should be marked – please pass on your ideas. If you are able to actually organise the visit as well, even better still – there are others experienced in arranging activities who are always willing to help and advise if required.

Contact: Jane Mayer, janemayeruk@yahoo.co.uk, 01782 533476, or jot your ideas down and post to 16 Shaldon Avenue, Stockton Brook, Stoke-on-Trent ST9 9PU, or to any member of the committee.

Reviews of Recent Events

Tuesday 29th November 2016: Chatsworth House, Christmas Market and Gardens.

It was a bitingly cold, fine winter's day. Our driver, Ian, had to take us by the "scenic" route in order to avoid some local traffic problems but, in fact, the journey was quite spectacular. The moors were white over with frost and the brilliant sunshine added to the stunning views.



Safely arrived at Chatsworth, we were efficiently off-loaded to explore the Christmas Market, which was in full swing with over 100 stalls selling almost anything your heart might desire! The chalet-like stalls were most attractive and there was music and seating available too. The main problem at 11am was that all but one of the coffee stalls were frozen up — the hot chocolate was good, though.

The gardens looked spectacular in the frost and the fountains were working, twinkling in the winter sun. Lunch could be taken either strolling around or in several cafes and it was then time to gather for our timed tour of the house at 2.15pm. It was very busy but well organised by stewards in costume who gently herded us onwards. The theme this year is 'The Nutcracker' and the decorations were fabulous; I lost count of



the numerous huge Christmas trees all decorated differently; there were four in the ballroom alone! There was even a live ballerina who obviously danced, but also interacted beautifully with the smaller children which was lovely to see. Also, it was lovely and warm inside the house!





The homeward journey was again affected by horrendous traffic problems in Stoke on Trent, which was almost grid-locked, but, again, Ian managed to find a way to get us back to our cars only slightly late. Well done, Ian.

As Bob Winter was unable to make the trip, Jane Mayer stepped in to carry out his immaculate planning — she made it look easy — thanks to both of you for all the hard work which made it a day to remember.

Katie Forrest-Hay.

Wednesday 14th December: Annual Christmas Dinner

Upon arrival at the Aston Marina, I was immediately impressed by the ambience of the dining room with its tasteful Christmas decorations and the setting of the tables and chairs and the table ware. With a glass of wine in hand, I looked at the splendid display of members photographs of activities and visits of the association during the past year. I selected my favourite photograph.

My relaxed state soon came to an end as I saw Cynthia bearing down on me with letter in hand "Dear member inviting me to write a report on the evening for the Association Newsletter. Volunteering took on a new meaning! Never mind the task was easy as I would award ten out of ten for the whole evening. Upon taking my seat at the table having forgotten my choice of courses I was immediately reminded of this as my choice was set out on my name card. How efficient! The meal was beautifully prepared, cooked and served in relaxed style by very friendly, pleasant and efficient staff. While coffee was served members were invited to take part in a number of quizzes just to tax the brain.

For all this members will join with me in thanking the management of the marina, the kitchen staff for their delicious cuisine, and the front of house staff for pleasant and efficient service, and of course a very big thank you to Cynthia and her "assistant" David for all the wonderful arrangements.

It's a pity that Christmas does not fall on Midsummers. Day as we could have enjoyed the magnificent view of the marina and boats through dining room windows!

Peter Moxon

Tuesday 17th January: Talk: David Barrett – A year in the life of a travel agent.

David Barrett and his colleagues have recently celebrated thirty years of Regent Travel and his talk was about a typical year, specifically 2016, in his life as a travel agent. He spends around 200 to 220 days a year out of the country on tour with his clients or planning future tours up to two years ahead – a hectic schedule, though clearly a most rewarding one. His talk was accompanied by stunning slides so that we felt as though we were also part of the 50 to 60 tours a year that Regent travel organises - from January/February walking in the Canaries or viewing the wildlife of Antarctica and Argentina right through to December in Austria's winter wonderland. A particular favourite of mine was the holiday in Croatia and the Norwegian cruise but there was so much to choose from that we were quite breathless by the end of his talk.

David confessed at the beginning of the evening that his entry into the travel business was almost accidental - Barclays loss was North Staffordshire's gain, and I'm certain that his parents never regretted handing over the deeds of their house to him as collateral (though I bet they had some sleepless nights at the time!).

Thursday 9th February: Car Outing: Spode Visitor Centre, Elenora Street, Stoke. ST4 1QQ

This visit had to be cancelled for reasons beyond our control.

Tuesday 14th February: Talk: Mike Herbert - Restoration of Trentham Estate.

Mike's talk attracted a record attendance of over 140. I must say we certainly were not disappointed. Mike opened his talk with a "pocket history" of the estate and the Leveson Gower Family which evolved into the Sutherland dynasty. He touched on the building and rebuilding of 5 different houses from the 11th century Augustinian Priory up to the 1850's Trentham Hall that we all recognise.

Capability Brown was engaged to landscape the gardens in mid 1700's. The formal gardens were laid out by Sir Charles Barry in the 1840's.

Unfortunately the Sutherlands decided to leave the estate when sewage pollution of the river Trent became unbearable. The hall was offered free to Stoke Council in 1905 which they declined. In 1912/13 the main hall was demolished, leaving only the Grand Entrance, Orangery, Clock Tower and the Sculpture Gallery standing. The Sutherlands retained the estate and opened the gardens as a public attraction eventually selling to John Broome in the 1980's. Then in turn he sold it to the Coal Board due to mining subsidence damaging the Lake, which they corrected, but unfortunately they allowed the buildings and gardens to become derelict and vandalised.

The estate was purchased by St. Modwen in 1996. Since 2000 £120 million had been spent on restoration of the gardens and redevelopment of the leisure attractions. Mike stressed that it is St. Modwen's aim is to recreate the vision of Capability Brown's landscape and Sir Charles Barry's formal gardens. The design of formal gardens has already been recreated, but the employment of contemporary designers including Nigel Dunnet famed for the swathes of wild flowers at the 2012 Olympic Games is giving a fresh approach to the planting.

The gardens cover 725 acres, all the trees and shrubs that were not indigenous to the original concept have been removed to be replaced by native species. The statue of Capability Brown that is on temporarily loan has been placed in the Italian Gardens and looks down approvingly.

Mike told us that planning permission had been obtained to build a five star hotel to be completed 2008. Due to the economic recession this had to be abandoned. It is now hoped that luxury apartments will be built having the same façade as the original Trentham Hall.

Mike stressed how difficult it is to get the right balance for the future of the gardens, the income from the commercial side being sufficient to finance the ongoing restoration programme.

Mike also emphasised that the development of the shopping village experience is not in any way intended to compete with the town shopping centres.

We all should be proud that we have such an awards winning venue of National recognition including the accolade of Garden of the Year 2015/16, (the only garden to have this award two years consecutively), Best Historic Garden, Visit England award and Countryfile Garden of the year.

Janet Taylor and John Pedrazzini.

Thursday 9th March: Car Trip to Burslem with guided tours of St Joseph's Roman Catholic Church and the Leopard Hotel

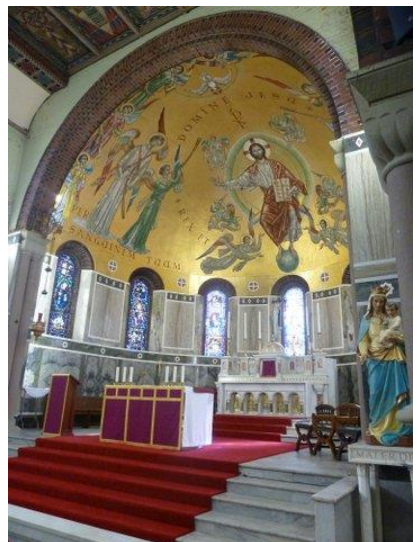
We had been promised tea/coffee and a slice of cake at the start of our morning at St. Joseph's but the welcome by a team of voluntary ladies offering us a feast of delicious homemade cakes was beyond all expectations.



From the outside the church can look a little forbidding (the multi-coloured bricks came from the Fenton Colliery Company) but once settled into the pews we were transformed to a church in Tuscany complete with sunlight streaming through the windows. Our very informative church guide, Dr. Gillian Meller, explained that the building is one of 29 listed sites in Burslem and is a Grade 2 star listed building. In 1927 Fr. Browne, the then parish priest, was keen to build a new church whose architecture would break away from the Gothic revival style and instead echo the Romanesque. Within the mother town of the Potteries, Burslem, pock-marked and blackened by its many bottle ovens, St. Joseph's arose in splendour, paid for and

built in part by local working class Catholics. As Fr. Browne walked around his parish he offered the unemployed, standing around the town, a meal of bread and soup if they would work on site for a few hours.

We were delighted with the light and airy interior, crowned by the vast sanctuary domed ceiling of Christ in Glory painted by Moira Forsythe, the daughter of the Superintendent of the Burslem School of Art, Gordon Forsythe. Gordon was also to design and supervise the making of the stained glass windows. These were inspired by Chartres cathedral in France and constructed by local workers. The church is currently undergoing urgent renovation with the aim of restoring it to its glory by its centenary in 2027, as a living parish church, not just a museum.



A short walk took us to the Leopard Pub in the centre of Burslem – from the sublime to the cor blimey! The Leopard is an hotel in continuous use since at least 1765 where the great potter Josiah Wedgwood dined with the canal engineer James Brindley in March of that year in negotiations that led to the cutting of the Trent and Mersey canal. There we had a choice of delicious Leopard Lobby or a roast meal and



a superb selection of hand pulled beers! The pub has basically changed little over the years apart from the light and airy atmosphere and lack of overflowing ash trays. We were treated to a very informative tour by very knowledgeable guides, little knowing what we were letting ourselves in for. We were first taken up the narrow steep stairs to the Victorian hotel wing that had been closed up since 1956. It was very dark,

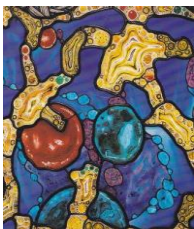
decrepit and gloomy and it reminded me of the Ghost Train Rides of my childhood. This was followed by a visit to the fine Georgian bedrooms at the front and to the pub cellars that had once been used as the town gaol and hosted the witch of Burslem, Molly Leigh (or so we were led to believe!). I am not sure that the Health and Safety Executive have paid a recent visit to this part of the Leopard ...

Our thanks go to Helen Mansell for all her splendid organisation that led to such a memorable day.

Members enjoyed yet another very successful repeat visit to Burslem on 23rd March.

Chris Spicer

Thursday 9th March: Talk: Keith Cattell – Light Fantastic – 1000 years of stained glass.



We had an excellent talk from Mr. Cattell who talked with passion about the history of stained glass. He stated that the first stained glass was found in Constantinople and dates from the 4th century. An interesting fact was that the colours all came from metal oxides. Although the majority of stained glass over the centuries has been in windows of religious centres other windows show 'cartoon glass' from as early as the 12th century. Wonderful slides showed windows with superb colours and detail which made the talk so interesting. We heard that some colours were painted on and then heated into the glass. Mr. Cattell showed such a depth of knowledge in describing each slide and included many jokes. He gave us a most enjoyable evening.

Lesley Huson.

Sunday 19th March: Walk: Swynnerton and beyond.

At 9.50am we arrived at the newly resurfaced car park at Swynnerton Village Hall to join some thirty people on Sunday morning. Richard had negotiated parking there in return for a small contribution to the Village Hall funds. The car park is situated adjacent to Early Lane the origin of which was unknown. The sound of exploding ordnance reminded us of the presence of the local army range on the site of the old munitions factory while we were donning our walking gear.

The weather was ideal for walking being dry, fine, and mild with a pleasant breeze. We think that Richard receives divine help since his walks seem always to be blessed with good weather. Setting off along Early Lane via the remains of a continuing green lane the Wrekin soon came into view some 22 miles distant. Following a clearly defined route across arable fields we crossed the A519 and passed the boarding kennels to reach Cranberry. Cranberry, called “Bagum” by some of the older inhabitants, once had the Red Lion pub and a Methodist chapel both of which are now private houses. The hamlet is home to Cranberry Commercials which occupy the premises which once housed the vehicles associated with a former local sand quarry which supplied moulding sand to the steel industry.

Continued overleaf

┌ ┌ ┌ ┌ ┌ ┌ ┌ ┌ ┌ ┌ ┌ ┌ ┌ ┌ ┌

North Staffordshire National Trust Association: Membership Application

We are always delighted to welcome new members. **Note:** you must first be a member of the National Trust or a National Trust Volunteer.

Annual subscription, for the first member £10.00. For each additional member at the same address £7.00.

Please complete the form overleaf and send, with your cheque, payable to “North Staffs NT Association”, to the Membership Secretary: Richard Adams, Gables End, Holly Bank, Stoke-on-Trent ST4 8FT, Email: rijadams@doctors.org.uk Tel: 01782 646054. Additional membership forms may be downloaded from www.northstaffsnt.org.uk. Thank you very much.

Continuing via Back Lane and the “Girder Bridge” over the west coast main line we crossed the marshy field to the Meece Brook. Our feet were kept dry due to the board walk which was laid at the request of the Parish Council by David Wright, one of our North Staff’s NT members, and his band of volunteers from the Stone Ramblers.

This was a local walk for some of our members with John and Hazel Spriggs kindly accommodating us in their garden at Bowers Bent for a coffee break. We sat around the lily pond and enjoyed a short rest in a beautiful environment. Our return via Sandy lane and old green lanes crossed the A519 to follow round the Moorfields Industrial estate then past a flooded section which was avoided by taking to the grass verge guided by Richard. The route back to Swynnerton then took us past the cricket field and onto the Fitzherbert Arms where we had an excellent lunch. The “Fitz”, owned by Lord Stafford whose home is Swynnerton Hall, has recently been refurbished.

Peter and Sally Jones

┌ ┌ ┌ ┌ ┌ ┌ ┌ ┌ ┌ ┌ ┌ ┌ ┌ ┌ ┌



North Staffordshire National Trust Association: Membership Application

I/We wish to apply for membership of the North Staffordshire National Trust Association. I/We are NT members or volunteers.

Name(s)	Association number	Cost:
.....
.....

Address	Total
.....		
.....		

Telephone No. email

NSNTA Committee 2016-17	
Ralph White Chairman ralph@ralphwhitedesign.com	Thyme Cottage, 20 Upper Green, Wolverhampton WV6 8QH 01902 752833
Rose Wheat Vice-chairman rose.wheat@sky.com	12 West Avenue Newcastle ST5 0NB 01782 616113
Richard Adams Secretary and Membership Secretary rjadams@doctors.org.uk	Gables End, Holly Bank Stoke-on-Trent ST4 8FT 01782 646054
Madeleine Hopley Treasurer maddy@mhopley.fsnet.co.uk	5 Sedbergh Close Newcastle ST5 3JQ 01782 618821
Jane Mayer Programme Organiser janemayeruk@yahoo.co.uk	16 Shaldon Avenue, Stockton Brook Stoke-on-Trent ST9 9PU 01782 533476
Roger Cartlidge rogandshirl@hotmail.co.uk	3 The Mount, Scholar Green Stoke-on-Trent ST7 3HY 01782 777513
Sue Corlett sue.corlett@btinternet.com	24 The Covert Newcastle ST5 4BL 01782 719075
Cynthia Dumbelton dumbeltoncynthia@gmail.com	32 The Lea Stoke-on-Trent ST4 8DY 01782 641765
David Morgan david.morgan467@outlook.com	7 Shefford Road Newcastle ST5 3LE 01782 617467
Sue Till st.till@icloud.com	14 Whitmore Road Stoke-on-Trent ST4 8AP 01782 657468
Peter Wilson peterwilsonendon@btinternet.com	Greenbank, Church Lane, Endon Stoke-on-Trent ST9 9HF 01782 502150
Bob Winter robert.winter14@btinternet.com	15 Robinson Road Stoke-on-Trent ST4 8ED 01782 642942

Summary of Summer Programme May to September 2017

May

Tuesday 16 th	AGM & Talk by Gaye Blake Roberts on Josiah Wedgwood
Thursday 18 th	Car Trip: Stafford History Walk
Tuesday 23 rd	Coach Trip: Worcester; Greyfriars', Cathedral & Elgar's Birthplace

June

Tuesday 6 th	Car Trip: The Whites' NGS garden in Uttoxeter (evening visit)
Wednesday 21 st	Coach Trip: Papplewick Pumping Station & Staunton Harold

July

Saturday 8 th	Car Trip & Guided Walk at Cannock Chase – WW1 theme
Tuesday 18 th	Coach Trip: Birmingham: Winterbourne House & Barber Institute

August

Tuesday 8 th	Car Trip: Wollerton Hall & Gardens
Wednesday 23 rd	Coach Trip: Welbeck Abbey (fully booked)

September

Sun 10 th - Thurs 14 th	Holiday to Bristol
Thursday 28 th	Coach Trip: Charlecote Park & Stoneleigh Abbey

Dates for your Diary

September 26 th	Talk: Mervyn Edwards: 'The Potteries Parks'
October 18 th	Coach Trip: Bolsover Castle & Hardwick
October 24 th	Talk: Brian Price: 'A Laugh on the Ocean Wave'
November 21 st	Talk: Eric Pemberton: 'Loggerheads Sanatorium'

*This Newsletter (and previous editions) is available on the website.
If required additional copies of booking forms can be printed
using 'Booklet' printing for multiple pages.*