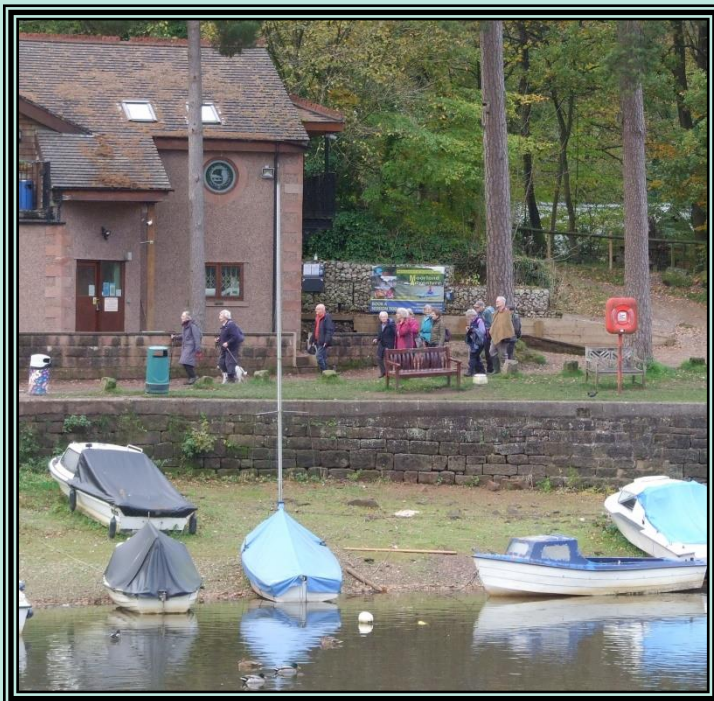


# North Staffordshire National Trust Association

Newsletter No. 121  
Winter-Spring 2022  
[www.northstaffsnt.org.uk](http://www.northstaffsnt.org.uk)



Completing the walk round Rudyard Lake.

## Arrangements for Trips

Coaches now depart promptly from **Brunswick Street** at the front of the Jubilee Baths. **The car park on School Street is now short stay.** The nearest long stay car park is the public car park next to the Borough Arms Hotel. We do not pick up members en route.

Please send a separate cheque, with the event name on the reverse, and a stamped addressed envelope for each event applied for, even if it is with the same organiser. People wishing to sit together should complete one form.

Non-members travelling as members' guests pay an extra £2 for Coach Outings and £1 for car trips. If circumstances dictate they have lower priority booking.

Please make cheques payable to the North Staffs National Trust Association. Cheques are normally not cleared until after an event. We will give notice if we need to do otherwise.

Refunds on cancellation are possible only if there is a waiting list. Please do not find your own substitute travellers: people on the waiting list have priority.

The Committee reserves the right to cancel any event that is not viable.

The personal accident insurance arranged by the Association through the Trust now has an age limit of 90. Our public liability insurance covers members at any age.

Whilst participating in an event please make sure that you carry the organiser's mobile phone number from the booking acceptance form in case you get lost. Please **DO NOT MAKE** alternative arrangements to get home without first telling the trip organiser.

---

This Newsletter is published by North Staffordshire National Trust Association to provide members with information on the forthcoming programme, reports on recent events, and other membership issues. The text and images are copyright and may not be reproduced without the owner's permission. Any views expressed by individual contributors are their own and not necessarily of the NSNTA or the NT. No liability will be accepted for errors or omissions.

We are always delighted to welcome new members – please contact the Membership Secretary (details inside back cover) or download the on-line form to apply.

The editor welcomes items of direct relevance to Association activities, and thanks all contributors, with apologies for failure to acknowledge any, particularly if sent by post.

Copy and correspondence for the next issue, due for publication in April, should be addressed to [newsletter@northstaffsnt.org.uk](mailto:newsletter@northstaffsnt.org.uk) (01782 791360) by the **15th March** at the absolute latest (but earlier if possible!)

Printed by Colourimage Printers, High Wycombe (01494 52999) [colourimage@aol.com](mailto:colourimage@aol.com)

# North Staffordshire National Trust Association Newsletter No. 121 Winter-Spring 2022 Programme

## A Note from the Chair



Dear Members,

The Committee and I, plus Archivist, send Best Wishes for a Happy and Healthy New Year and unlike last year, look forward to meeting up with you in person.

We will still have to be virus aware to keep you safe, but we hope you will join us for some free talks in the warm or healthy exercise exploring somewhere fascinating at modest expense.

I am hoping our programme is the antidote to some of the worry about things which are unavailable, available at ever increasing cost, or a long wait. Food and fuel spring to mind, so to cover both, to help out National Trust members

particularly, I am hoping Rose will organise a talk on “Scavenging in the woods”.

As a guide to the New Year I was thinking of consulting our new NT Regional Director for Midlands and East, a Mr. Forecast. I was hoping his first name was “Ace” but he’s called “Paul”. He started “humble” but has been exalted. He has quite a job on. I mustn’t tell tales out of school, but the amalgamation of regions and reorganisation hasn’t made life easy. I am getting my excuses in early, but we are aware of difficulties with staff coping with the workload whilst still ensconced at home.

Nevertheless, there is much to which to look forward in the currency of this issue. Talks inside, outside, snowdrops, aconites, lighter days, daffodils, tulips and blossom. I hope we are all spared to enjoy them in company together.

*Ralph*

~~~~~

## **Data Protection Policy**

The North Staffordshire National Trust Association (NSNTA) is a non-profit voluntary organisation which endeavours to comply with the principles of the Data Protection Act 1998, and the General Data Protection Regulation (GDPR) of May 2018.

Personal data collected by us on membership forms, renewal forms and event booking forms will be limited to: names, addresses, email addresses and telephone numbers. It will only be used for: administration of membership, communication of information and organisation of events within and related to the NSNTA.

Personal data will not be shared with the National Trust or any third party, or to other members.

Membership lists are destroyed when 18 months old. Lists relating to specific events are destroyed when the event is complete.

Contact the Membership Secretary if you wish to view/amend/delete any of your personal data.

By providing personal data on our membership forms and event booking forms, you are consenting to this, our Data Protection Policy, and to our stated use of your personal data.

~~~~~

In order to comply with the terms of GDPR and to improve security and privacy the following policies are being adopted with particular reference to the publishing of details of members organising events. Full leaders' postal addresses will only appear on the booking forms and not in the main text of the magazine, which will just carry email addresses and telephone numbers. The booking forms are included in Newsletters distributed to bona-fide members of NSNTA but will not be contained in copies of the Newsletter posted on the website. Access to back copies of the Newsletter on the website which contain leaders' addresses will be restricted by password, available to members on request.

Attendees of NSNTA events are advised that they may be included in group photographs for publication in the Newsletter or on the website, but they will not be named without their specific permission. If anyone does not want to appear in such photographs, please let the organiser or the editor know.

## *Forthcoming Events*

*All talks commence at 7:30 p.m. at the North Staffordshire Conference Centre (the Medical Institute), Hartshill Road, Stoke-on-Trent, ST4 7NY unless otherwise stated.*

From time to time it becomes necessary to change details of an event or to announce updates to booking arrangements, availability etc. or to advise members of other matters that have arisen. To cover this, please check the **STOP PRESS** feature on the website to be kept up to date.

### **Tuesday 18<sup>th</sup> January: Talk: Bob Kermeen, ‘Soraya, Empress of Persia.’**

‘Queen’ Soraya was the Princess Diana of her time – she was the world’s most photographed woman, chased by the paparazzi wherever she went. Divorced by the Shah of Iran in 1958 because she couldn’t have children, the talk covers her background, her wedding, the consequences of the Mossadeq affair and life after her divorce. Bob Kermeen last visited us in March 2019 when his talk on Gertrude Bell was enjoyed by one of the largest audiences we have ever had. He is an experienced speaker and author of several novels under the pen-name RW Kay.

### **Wednesday 26<sup>th</sup> January: Car Trip: Guided walk on “The Shirleys of Etruria” plus a tour of the visitor centre and the mill.**

During the 19<sup>th</sup> century the Shirley family of Shirley’s Bone and Flint Mill were as well known locally as the Wedgwoods. Come and join in a 3-mile history walk around Etruria ably guided by Andy Perkin of the Potteries Heritage Society and Bernard Lovatt from the Etruria Industrial Museum.

The walk will start at 10.00am from the Visitor Centre near to Etruria Junction. (Parking is free of charge and directions to the car park will be posted out to you.) Along our meandering route we will discover, among other things, where the Shirleys lived, worked, worshipped and are buried. The 2-hour stroll to see the heritage sites associated with the generations of this family will take place mainly along well surfaced paths, towpaths and pavements and avoids main roads where possible. There is a stepped footbridge to be crossed near the beginning of the walk and a few more steps later, both of which can be avoided if necessary.

Upon concluding our walk we will enjoy tea/coffee & biscuits back at the museum, where lavatories are available, and shall have a guided tour of the visitor centre and mill. The morning’s Etruscan experience will conclude at approximately 1.00pm.

**Cost:** £10 per person (non-members £11) to include 3-mile/2-hour history walk with the services of two very knowledgeable presenters, plus a guided tour of the Industrial Museum with tea/coffee & biscuits. Number limited to 20; preference given to members.

Please apply to Helen Mansell, 3 Oakdale, Newcastle, Staffs, ST5 4JG (07866 352 927, Email: helenmansell@gmail.com) enclosing: the booking form, a cheque made payable to “NSNTA”, and your stamped, Self Addressed Envelope for direction details.

### **Thursday 3rd February: Walk: The Rum Tum Tardy Um Walk, Caverswall.**

This is an interesting village with a lot of history having its own castle and set of stocks.

The walk follows the route of the old Carsa Wakes and takes in the nearby village of Dilhorne with local traditions and dialect. Distance: Four Miles easy walking.

There is the opportunity to have a meal or drink at the Red House afterwards where the chef is a friend of the leader.

Meet at 10.00 hrs at The Red House pub car park at Caverswall (near Weston Coyney).

Directions. Leave Hanley on the A5272 Weston Coyney/ Bentley Road and go over the cross roads at W/C two miles into Caverswall village where the pub is in the square. Post Code ST11 9ED.

Suggested donation for the walk is £3.00 for members, £4.00 for guests, payable on the day.

Please book your place with David Fowler, by email to [cdfowler@ymail.com](mailto:cdfowler@ymail.com), or by telephone on 01538 753027 or 07950 590369.

### **Tuesday 15 February: Talk: Henry Birks, 'The Forgotten Artists of North Staffordshire'.**

Henry Birks is the co-owner of TrentArt a gallery in Newcastle-under-Lyme which specialises in original paintings and works on paper by a wide range of modern British artists with the emphasis on quality. His professional and personal passion for local art means he is extremely well-placed to talk to us about 'The Forgotten Artists of North Staffordshire'. It is always a pleasure to look at the varied art in the windows of his beautiful gallery and I am anticipating a fascinating presentation.

### **Tuesday 15<sup>th</sup> March: Talk: Kath Reynolds, 'The Famous Folk of Stoke'.**

In this talk Kath Reynolds will celebrate the famous sons and daughters of the Stoke-on-Trent area and the contributions they have made to local, regional, national and international history. She will look at the famous potters, entertainers, sports stars and other Stokies who have intrigued and inspired us. Kath is a very experienced speaker and her talks reflect many years of collecting stories, memories and musings from the people of Stoke in addition to extensive research in libraries and archives.

## Thursday 17<sup>th</sup> March: Car Trip: Guided tour of Sandon Church, including bell ringing, plus an option to walk to Trentham Tower in Sandon Park.



Join us at 10.00am to journey through history at All Saints' church, Sandon, situated on the Sandon Estate but just outside of Sandon village – the reason for which will be explained to us.

During our guided tour of this pre-1130 Norman church, which through the centuries has been reconfigured several times, we will learn about the ancient wall paintings, the Royal Coat of Arms & the range of Hatchments to the Harrowby family, and the tombs in

the chancel - the most elaborate being the Sampson Erdeswicke monument dating back to 1601 with effigies of his two wives kneeling in prayer. We can marvel at the ancient wall paintings, admire the beautiful stained glass windows - including one in the Pugin style, see Lady Harrowby's carved dogs and view the fine collection of silver – not normally on display. If you fancy you can climb up to the Gallery pew installed in 1782 which provided seating for Baron Harrowby and his family.



In addition there is an exciting opportunity to ascend ten stairs into the ancient bell tower to learn about the rudiments of bell

ringing, the oldest bell here dating back to 1609. The surrounding graveyard contains some ancient memorials and various interesting features.

At the end of our guided tour of this Grade 1 listed church and churchyard we can indulge in a welcome cup of tea/coffee and slice of cake (compliments of the Church's volunteers). For those who wish to stretch their legs before heading home, or perhaps to the Dog & Doublet in Sandon for a meal, why not take a short circular ramble with Anthea & Helen on the adjacent Sandon Estate.

The parkland walk of around an hour takes us from the church along public tracks and grass footpaths. There are excellent panoramic views overlooking the Trent Valley. The

ramble will be to the Trentham Tower which was relocated here as a folly after 1912 at a cost of £192 7s 0d. This Italianate structure originally formed the top of the tower at Trentham Hall, built to designs by Sir Charles Barry around 1840. We will also glimpse the William Pitt (the younger) commemorative column – a 75' stone Doric column erected by the 1<sup>st</sup> Earl of Harrowby in 1806 following a duel.



**Cost:** £7.50 per person (non-members £8.50) to include guided tours of the church, churchyard and bell tower, and also tea/coffee and cake. (No charge for car parking.)

[Parkland walk free of charge to those who wish to join Anthea & Helen after the church visit.]

Please apply to Helen Mansell, 3 Oakdale, Newcastle, Staffordshire, ST5 4JG enclosing: the booking form, cheque and your stamped, Self Addressed Envelope for confirmation and direction details. (Enquiries to 07866 352927 or helenmansell@gmail.com).

### **Sunday 3<sup>rd</sup> April: Walk: Apedale and Silverdale Country Parks.**

This walk explores two of Newcastle's country parks. Both are part of the industrial history of our area, and are now transformed into havens of peace and sanctuaries for wildlife.

Apedale is the more established of the two, and retains some of its pit-head buildings, a section of working railway, and a drift mine with underground tours available. There is a visitor centre, with a small museum and café.

Silverdale colliery finally closed in 1998 after some 235 years of production. Very little remains of any mine buildings, but we do now have a large area of publicly available land for walkers, cyclists and horse riders. Nature is taking over, and the scarred land is greening up well. There are several lakes, where open-cast mining once dug out its craters.

We will meet at 10.30 am at the Apedale visitor centre, and set off through the woods. I can't offer teddy bears having a picnic, but there is a surprise waiting there for us. Deep in the woods we find the Watermills Chimney, the last remaining structure from the Watermills mine. Built as a ventilation shaft in 1840, it was originally 186 feet high. We still have the impressive base, grade II listed, home to bats, and with Victorian inspirational mottoes still just legible on each face.





We will take a break at the top of the hill, where the old winding wheel and a coal truck commemorate mining in Staffordshire. The views from here over Newcastle, Keele and beyond are outstanding.

We cross over to Silverdale park, where a giant sculpture of a miner's face looks out over the valley below. A loop around one of the larger lakes, then back to the Apedale side, down through the trees to the visitor centre again.



The café should be open for us, for basic food and drinks at very reasonable prices. Timetables for next year are not yet published, but there is a good chance the train will be operating at weekends by then.

The walk is about four miles in length, with a two mile option, mostly on gravelled paths. The uphill sections are all gradual climbs. No stiles! I expect it will take us about two and a half hours.

If you prefer a shorter walk, come with the group for the first part of the walk, to the pit wheel, then make your own way back to the visitor centre.

Suggested donation for the walk is £3.00 for members, £4.00 for guests, payable on the day. Children and well-controlled dogs are welcome at no charge.

Please book your place with Richard Adams, by email, or by post with an SAE. [rjadams@doctors.org.uk](mailto:rjadams@doctors.org.uk) or 79 Whitmore Road, Newcastle ST5 3LZ

## **Tuesday 19<sup>th</sup> April: Talk: David Skillen, 'Five Years in 50 Minutes - An Overview of the American Civil War'.**

David last spoke to us in 2018 on the topic of the Royal Observer Corps and my predecessor, David Morgan, was so impressed by his talk and the audience reaction that he immediately re-booked him - then Covid came along! I am delighted to finally welcome him back and, on this occasion, he will inform and entertain us about the American Civil War- not a period we tended to study at school! David has studied military history for many years and has travelled extensively in the USA, so is well-qualified to talk about this traumatic period in American history.

## Thursday 28<sup>th</sup> April: Car Trip: Staffordshire Wildlife Centre with a 2 hour guided tour.

The Wolseley Centre is the main base of the Staffordshire Wildlife Trust, the county's leading nature conservation charity, managing its 30 nature reserves. There is another centre in the north of the county at Westport Lake. The Centre has been extended and we shall have a guided walk of the grounds with Mr. Alex Rogers, the Wolseley Centre Warden. There are lots of uneven paths.

10.30 am Coffee

11-1 pm Talk and walking tour of the reserve, a 26 acre site.

1 pm Lunch in the Kingfisher restaurant. Food and drinks are at own expense.

Car parking is free but donations to the SWT charity are welcome.

Cost £6.50 p.p., non-members £7.50. Please apply, using the booking form, to Anthea Bond, 11 Greenway, Trentham, Stoke-on-Trent, ST4 8AN. Enclose an s.a.e. and cheque before March 30. Enquiries: [AntheaBond@hotmail.com](mailto:AntheaBond@hotmail.com).

Directions:

Wolseley Bridge is on the A51, north-west of Rugeley. Follow the signs at the roundabout to the Wolseley Centre, the post code is ST17 0WT. Tel 01889 880100 or visit [www.staffs-wildlife.org.uk](http://www.staffs-wildlife.org.uk)



## **Wednesday 4th May 2022: Coach visit: Coventry Transport Museum and Cathedrals.**

This visit will coincide with the end of Coventry's year as City of Culture.

The coach will leave Newcastle at 8.15 a.m. for our morning visit to the recently refurbished Coventry Transport Museum.

On arrival, we will have an introductory talk, followed by a guided tour of the Transport Museum. On display are numerous modes of transport and, in addition, there is much to see which reflects the social history of the city.

Housed in 14 galleries, discover the fascinating story behind the development of some of the most unique vehicles ever invented, which includes an extensive collection of early bicycles, motor bikes, cars, (including many vintage and classic cars), armoured vehicles, buses and some of the fastest vehicles ever built. It is claimed to be the largest publicly owned collection of British made vehicles and all manufactured in Coventry.



Another gallery is devoted to a Sounds/Light Blitz Experience, where you can relive the horrendous bombing that Coventry experienced during WW2 and view an original Anderson Shelter.

Lunch (at own expense) can be taken in the on-site café or at one of the many eateries around.

We will reassemble at 2.00 p.m. at the Guides' Meeting Point in the Cathedral, to commence our guided tour of both the old and new cathedrals.

The new cathedral, designed by Sir Basil Spence, is a powerful reminder of the City's enduring role in promoting peace and reconciliation and stands alongside the old cathedral ruins that were blitzed during WW2.

In the new cathedral are many notable items of interest, including the John Hutton glass screen, The Baptistry Window, the Tapestry of Christ the Glory and the Epstein figure of St Michael and the Devil.

Cost £36 (non-members £38). Cost to include coach, admission and guided tours of the Transport Museum and both Cathedrals, driver's tip and the usual contribution to the National Trust.

Should anyone wish to deviate from the proposed programme, there is the acclaimed Herbert Art Gallery adjacent to the cathedral.

Please apply to Bob Winter, 15 Robinson Road, Stoke-on-Trent ST4 8ED, 01782 642942, robert.winter14@btinternet.com, including a cheque and stamped addressed envelope.

## **Sunday 15<sup>th</sup> - Thursday 19<sup>th</sup> May 2022: Coach holiday: Scottish Heritage & History.**

There are still vacancies on the postponed NT Scottish Holiday arranged with Regent Travel, now scheduled for next May. It will be a 4 night/5 day break staying at the 4-star New Lanark Mill Hotel, located in the heart of a World Heritage Site, a beautifully restored 18<sup>th</sup>-century cotton mill village. Together with Regent Travel, we have planned a full holiday visiting both Glasgow and Edinburgh and including many National Trust properties along the way.

Cost: £515 pp (£60 single room supplement) for NT members. Please see the separate flyer and booking form included with the last Newsletter or available from Regent Travel in Stone, or see or download copies from our website. Further enquiries to Marion Lycett, marionlycett@hotmail.com, 01782 502919.

### *Booking / Enquiry Forms*

*It is preferable that organisers hold emergency contact details for members on trips should a situation arise. You are therefore invited, particularly if travelling without a companion, to provide the name and number of someone who can be contacted in emergency, along with any critical medical conditions that might be relevant, or whether (and where) you carry ICE (In Case of Emergency) details. We also request that you provide your own mobile number so that you can be contacted should you fail to appear at a rendezvous.*

### **Wednesday 26th January: Car Trip: Guided walk on “The Shirleys of Etruria” and visit to the Industrial Museum**

**Cost:** £10 per person (non-members £11) to include 3-mile/2-hour history walk with the services of two very knowledgeable presenters, plus a guided tour of the Industrial Museum with tea/coffee & biscuits. Number limited to 20; preference given to members.

Please apply to Helen Mansell, 3 Oakdale, Newcastle, Staffs, ST5 4JG (07866 352 927, Email: helenmansell@gmail.com) enclosing: the booking form, a cheque made payable to “N Staffs Nat Trust Assoc”, and your stamped, Self Addressed Envelope for direction details.

### **Thursday 17th March: Car Trip: Guided tour of Sandon Church, churchyard and bell tower with the option of a walk in Sandon Park**

**Cost:** £7.50 per person (non-members £8.50) to include guided tours of the church, churchyard and bell tower, and also tea/coffee and cake. (No charge for car parking.)

[Parkland walk free of charge to those who wish to join Anthea & Helen after the church visit.]

Please apply to Helen Mansell, 3 Oakdale, Newcastle, Staffordshire, ST5 4JG enclosing: the booking form, a cheque made payable to “N Staffs Nat Trust Assoc”, and your stamped, Self Addressed Envelope for direction details. (Enquiries to 07866 352927 or helenmansell@gmail.com).

**Wednesday 26<sup>th</sup> January: Car Trip: Guided walk on “The Shirleys of Etruria”**

Name(s) NSNTA membership no. Cost: £

.....  
.....

Address Total .....

.....  
.....

Tel.Nos: Home..... Mobile ..... email .....

Name and Telephone No. of friend/relative in case of emergency:

.....

Critical medical conditions: .....



**Thursday 17<sup>th</sup> March: Car Trip: with Guided tour of Sandon Church, churchyard and bell tower**

Name(s) NSNTA membership no. Cost: £

.....  
.....

Address Total .....

.....  
.....

Tel.Nos: Home..... Mobile ..... email .....

Name and Telephone No. of friend/relative in case of emergency:

.....

Critical medical conditions: .....



**Thursday 28<sup>th</sup> April: Car Trip: Staffordshire Wildlife Centre with a 2 hour guided tour.**

Cost £6.50 p.p., non-members £7.50. Please apply, using this booking form, to Anthea Bond, 11 Greenway, Trentham, Stoke-on-Trent, ST4 8AN. Enclose an s.a.e. and cheque payable to "N Staffs Nat Trust Assoc" before March 30.

**Wednesday 4th May 2022: Coach visit: Coventry Transport Museum and Cathedrals.**

Cost £36 (non-members £38). Cost to include coach, admission and guided tours of the Transport Museum and both Cathedrals, driver's tip and the usual contribution to the National Trust.

Should anyone wish to deviate from the proposed programme, there is the acclaimed Herbert Art Gallery adjacent to the cathedral.

Please apply to Bob Winter, 15 Robinson Road, Stoke-on-Trent ST4 8ED, 01782 642942, [robert.winter14@btinternet.com](mailto:robert.winter14@btinternet.com), including a cheque payable to the "N Staffs Nat Trust Assoc" and stamped addressed envelope.

**Thursday 28<sup>th</sup> April: Car Trip: Staffordshire Wildlife Centre with a 2 hour guided tour.**

Name(s) NSNTA membership no. Cost: £

.....  
.....

Address Total .....

.....  
.....

Tel.Nos: Home ..... Mobile ..... email .....

Name and Telephone No. of friend/relative in case of emergency:

.....

Critical medical conditions: .....



**Wednesday 4th May 2022: Coach visit: Coventry Transport Museum and Cathedrals.**

Name(s) NSNTA membership no. Cost: £

.....  
.....

Address Total .....

.....  
.....

Tel.Nos: Home..... Mobile ..... email .....

Name and Telephone No. of friend/relative in case of emergency:

.....

Critical medical conditions: .....





## *Membership*

We have pleasure in announcing and welcoming the following who have joined since we last welcomed new members: Edwina Fowler, Andrew and Sally Wilding, John and Liz Leese, Phil and Sandra Allcock, and Sue Wild. Current membership is 319.

**NT Membership Discount** A reminder that a discount on the general National Trust membership subscription is available to eligible members – see Newsletter 110 or their website for more details.

## *Photographic Archives*

A reminder that Kay Williams, would be grateful for some photos/leaflets from visits when she is not there herself; prints or digital images are equally acceptable. See inside the back cover for Kay's contact details.

The editor acknowledges and thanks contributors of photographs included in this issue, and also for any photos sent but not used. Any photographs submitted will also be passed on to Kay for possible use in the archives, and may be used on the NSNTA website for record or publicity purposes. Copyright (which must be owned or obtained in writing by the submitter) is acknowledged for all images even if not stated in the magazine. Please contact the editor if more details of any item are required.

## *Reviews of Recent Events*

### **Tuesday 14<sup>th</sup> September: Walk: Churnet Valley - Consall Nature Park**

The day started with a dire weather forecast but fortunately I had said my prayers the night before and within 15 minutes the sky brightened and seven brave souls enjoyed a very pleasant walk in the Churnet Valley.

I was able to explain the history of the Country Park which is now under RSPB management and has been renamed The Consall Woods Reserve.

We visited the small hamlet of Hazels Cross - where the Kingsley Falconry is based and appeared on TV CH5 two weeks ago - leading onto the Cauldon Canal to view Podmore's Flint and Bone mill which had strong links to the Potteries and Stoke-on-Trent in general.



After leaving the canal we climbed back up to the visitor centre car park having completed 4.5 miles.

*Chris & David Fowler*

## **Tuesday 21<sup>st</sup> September: Talk: 'Chimney Sweeps and Climbing Boys', Steve Booth.**

This talk replaced the one on Scams by Georgina Woodcock, to be rescheduled later.

For our first talk in eighteen months we were delighted to welcome back an audience of around sixty members who were informed and entertained by Steve Booth on the subject of the infamous nineteenth century abuse of child chimney sweeps.

Steve had researched his subject thoroughly and spoke of the conditions in which these children, some as young as six, were forced to work. Many were orphans, sold into virtual slavery by the local authorities to save on their upkeep and ultimately the rates. The terribly confined spaces in which they worked and the soot led to physical deformities, eye problems and cancers and death before the age of twenty-five was not uncommon. The cruel deaths of children trapped in the narrow flues and chimneys eventually resulted in a concerted campaign led by Lord Shaftesbury to end this abuse. Locally this was led by Francis Wedgwood, (1800-1888), grandson of Josiah I, who was chairman of the Hanley and Shelton Chimney-sweeping Association. Thanks to their determined efforts, by 1859, this area was free of this appalling abuse, some years before national legislation was finally passed – something to be proud of.

*Rose Wheat*

## **Tuesday 5<sup>th</sup> October: Walk and/or Lunch: Views of Brown Edge & Beyond**

Seven intrepid walkers braved the wet and windy elements this autumnal morning and, I believe, felt good afterwards for doing so. The few miles walked, weaving along the lanes of Brown Edge, admiring the mixed architectural styles of properties and the far reaching views, gave us an appetite for our lunch at The Top Pub where we were joined by a further five members. Thank you to all those who were involved in some way and indulged me reminiscing and sharing various memories of my childhood locality.



*Helen Mansell*

## **Tuesday 19<sup>th</sup> October 7:00 p.m.: AGM and Talk: Hazel Griffiths - 'Santa Evita - Saint or Sinner? The Life and Legacy of Eva Perón'.**

**Minutes of the 41<sup>th</sup> AGM at the N Staffs Conference Centre, 19<sup>th</sup> October 2021 at 7.00pm**

Richard Adams welcomed members to the AGM and recorded 3 apologies from members.

**Chairman's opening remarks:** Richard reminded members that our Chairman, David Morgan, stood down last month as he is moving house to out of this area. He thanked David for all his work in stewarding the Association through the Covid lock-downs. We

mourn and remember all those friends and family who we have lost recently, whether through Covid or from other causes. However, many of us will also have new grandchildren or other additions to our families, and it is perhaps for these people that we are pleased to see the Association running again. It is part of our mission, to preserve our heritage and countryside, and to ensure it will be there for future generations to enjoy as we are now.

**The Minutes of the 40<sup>th</sup> AGM:** Richard noted that the 40<sup>th</sup> AGM in 2020 was held as an on-line video conference due to Covid restrictions at the time. No questions were asked. Richard asked that the record of the meeting should be accepted, and all present agreed.

**Secretary's report:** The Association is reviving itself. The walks programme started again in the summer, car outings begin this week, our Christmas meal is well-booked already, and coach trips and the holiday to Scotland are coming next year. Credit is due to Marion Lycett and her team of organisers, who have spent the last 18 months arranging, and then often cancelling and re-arranging, events to fit in with the restrictions in place. We thanked Sue Corlett, who is stepping down this year, for all her work for us, both on and off the committee.

Membership is currently 316, about 15% down on the 2019 figure, but this is encouraging considering all that we have been through.

**Treasurer's report:** Huw Davies presented the accounts for 2020-21 ending 31st March, summarised below, copies of which had been distributed.

Income from Subscriptions etc.	£630
Less Postage and Printing Expenses	<u>£804</u>
Deficit for year	£174
Reserves brought forward	£11554
Less Deficit for year	<u>£174</u>
Reserves carried forward	£11380

Huw noted that we have unsurprisingly had a quiet year financially, with low income balanced by low expenditure. Our reserves are in line with last year. Huw thanked James Scott of Hardings Accountants for examining the accounts for us. There were no questions, and the meeting accepted the accounts.

**Subscription level for next year:** Richard noted that payment of subscriptions was suspended last year during the lock-downs. The meeting agreed to restart subscriptions in January 2022, at the same rate as before, that is £12 per year for individual members, and £8 for further members at the same address.

**Approvals for re-election to committee:** In accordance with our constitution, committee members who have served for 5 years or more must seek approval to stand for re-election; there were seven who wished to stand again – Richard Adams, Roger Cartlidge, Cynthia Dumbelton, Sue Till, Rose Wheat, Ralph White and Bob Winter. The meeting agreed that these could stand.

**Nominations for officers and committee:** Ralph White had been nominated for the office of chairman. In addition to the above list of seven, Huw Davies, Marion Lycett, Jane Mayer and John Spriggs wished to stand again for re-election. Further nominations from the room were sought, but none were made.

Ralph White was elected as chairman by an overwhelming show of hands. All the other officers and committee were also approved by an overwhelming show of hands.

**AOB:** None

**Chairman's closing remarks:** Ralph thanked everyone for their confidence in returning him to office, and thanked the committee and our archivist, Kay Williams, for their continuing excellent work. He outlined three of the challenges we face: reorganisation of our support staff at the National Trust and the ongoing difficulty of contacting the right individual, many of whom are still working from home; obtaining funds to maximise our donations from schemes such as the Landfill Grant; and gaining wider recognition and publicity for associations such as ours, locally and nationally. Ralph also advised that the committee are considering proposing a change to the requirement for our members to be and remain members of the national NT.

The meeting closed at 7.24pm and was followed by the talk by Hazel Griffiths:

### **'Santa Evita - Saint or Sinner? The Life and Legacy of Eva Perón'.**

What a treat it was to welcome back Hazel Griffiths who gave us a brilliant, entertaining and informative talk on Eva Perón. Forget the musical and the film, Hazel presented us with a balanced, warts and all narrative of Eva's dysfunctional and poor childhood to her ascent to power and influence through her marriage to Juan Perón, and her untimely death at the age of 33, officially 30 years old. It wasn't just her date of birth that is controversial, her entire life-story is open to debate and interpretation, however, Hazel clearly thought Eva had been much maligned and genuinely saw herself as the champion of the poor working class from which she came. Her tomb is the top tourist attraction in Buenos Aires. She was a woman who still divides opinion and an intriguing one at that.

*Rose Wheat*

### **Thursday 21<sup>st</sup> October: Car Trip: Great British Car Journey, Ambergate.**

On arrival, 10:45, we were welcomed by friendly staff, and, after a brief introduction, were issued with handheld audio visual devices which read the bar code for the displayed cars and quickly moved to start of the exhibition.

This is a very different type of museum as it tells the story of the evolution of British cars which were displayed in 9 chapters from 1921 to the present day. The cars were brought to life with some fascinating facts and stories about their evolution, their designers, manufactures, their owners and in some cases restorers, were told by the audio visual device via the barcode.

The displays were not protected by barriers. Most car windows were left open, so that one could peep inside and smell the leather or in many cases, the plastic interior. Although some of the cars were exotic, for rich owners, the majority were ordinary family cars, typically owned and remembered by ordinary people. When we were walking around, we overheard nostalgic visitors reminiscing about the cars that they had owned or travelled in as a child.

Some examples of cars and their history.

Amongst the display of Austin 7's, which brought affordable motoring to the masses was a large 1934 Austin 16. It is still owned by the 4th generation of the original owner. Alongside it was the 1932 Austin 10 which had been bought by the owner's wife in 1934.



In 1961 to celebrate the production of the Millionth Morris Minor, 350 Lilac "Morris Millions" were made. When production ceased in 1972 a total 1.6 million had been manufactured.

A 25th "Anniversary Edition Mini" with only 14 clock miles and never registered, was one of two bought for the buyer's sons, and stored for when they came of age. Unfortunately they were rather tall, and didn't want the cars, so the cars were left in storage.

The final Daimler DS420 limousine, which was the most popular large British limousine, was built 1992 for Queen Elizabeth, basic price £36,000. Extras costing £10,000 were air conn, cocktail cabinet and TV. How much would the cost be today?



Amongst a good selection of Sports and Supercars was a 1981 DeLorean Gull Wing displaying its futuristic lines and concept. Although it was a financial failure, of the 9,000 produced, 6,500 survive, aided by an active supporters club.

The café served excellent coffee and offered a comprehensive lunch menu.

Many thanks Jane for organising this visit, it proves that there is much more to the history of an old car than the car itself. For those who were unable to attend, it's well worth a visit.

*John Pedrazzini & Janet Taylor*

## **Tuesday 9<sup>th</sup> November: Walk around Rudyard Lake.**

On a very pleasant morning, 17 of us met at the Rudyard Lake Hotel and set off on our walk around Rudyard Lake.

The lake was opened in 1797 to supply water for the canal system, which it does to this day. It's one of the most popular destinations in the Staffordshire Moorlands for both walker and sailors, with around 500,000 visitors each year.



The walk included a section of the Staffordshire Way along the eastern side of the lake, following the route of the Churnet Valley line of the old North Staffordshire Railway. After a comfort stop on the bridge at the top end of the lake and a few minutes bird watching, we made our way over a wide expanse of farmland, then a gentle climb up through woodland,



finally reaching the highest part of the lake. Passing through the grounds of Cliffe Park, a once impressive Gothic style house, Peter gave us a potted history of the house, as many of us will have pondered over its decline into its current dilapidated state. Thankfully, the final leg of the walk was not too muddy and we

reached the Rudyard Lake Hotel, where we were joined by a 6 further members for a very enjoyable lunch.



Thank you Peter for yet another interesting and enjoyable walk.

*Bob Winter*

## Tuesday 16<sup>th</sup> November: Talk: Geraldine Outhwaite - 'Biddulph Grange - the Hospital Where Everyone Smiles'.

The number of people who wanted to speak with Geraldine after her talk provided a good indication of the interest aroused by it. There is a great deal of information available about the foundation of Biddulph Grange and its spectacular gardens and also its latest incarnation as a National Trust property but little about the important work that took place there during the years in between. Geraldine's presentation remedied that gap in our knowledge in a most enjoyable and interesting talk.

Biddulph Grange began to operate as a dedicated children's orthopaedic hospital in 1928 under the auspices of Lancashire County Council after the North Staffordshire Cripples Society were unable to raise the funds to maintain it. There was a real need for this type of hospital owing to dreadful diseases such as polio and rickets which are now thankfully in the past. Under the eminent surgeon Sir Henry Platt the hospital developed into a centre of excellence for the treatment of these and other scourges. Geraldine talked about the treatments available at that time and the pleasure that the grounds afforded its young, and often severely disadvantaged patients. It was fascinating to learn that the original operating theatre was situated in the current tea room.

## Tuesday 21<sup>st</sup> December: Christmas Lunch & Craft Exhibition at Upper House.

We hope by the time you read this you will have enjoyed a good Lunch and the Art and Craft exhibition, and trust that Francis Wedgwood will have entertained us all. The full report will be in the next edition of the Newsletter.

~~~~~

*Having no more events to report on, we continue with our theme of reviewing some photos of past events. We thank Cynthia Dumbelton for these images from the "Arts and Crafts and the Seaside" holiday in September 2011. (These photos, and more, are also on the web site to a larger scale, along with photographs from the reports above.)*



2nd September 2011

Photo: DSCF2300



2nd September 2011

Photo: DSCF2301

St. Michael & All Angels church, Berwick

Paintings by the Bloomsbury set



2nd September 2011

Photo: DSCF2302



2nd September 2011

Photo: DSCF2303

St. Michael & All Angels church, Berwick



2nd September 2011

Photo: DSCF2306

On the roof of De La Warr pavilion, Bexhill.



2nd September 2011

Photo: DSCF2307

The rooftop "beach"



2nd September 2011

Photo: DSCF2308



2nd September 2011

Photo: DSCF2312





3rd September 2011

Photo: DSCF2323

A Wedding in Brighton



3rd September 2011

Photo: DSCF2324

Nymans (NT) gardens, 600 acre Weald estate



3rd September 2011

Photo: DSCF2326



3rd September 2011

Photo: DSCF2328C



3rd September 2011

Photo: DSCF2331



3rd September 2011

Photo: DSCF2332



3rd September 2011

Photo: DSCF2333



3rd September 2011

Photo: DSCF2336



3rd September 2011

Photo: DSCF2342



3rd September 2011

Photo: DSCF2343

Some of the magnificent dahlias on display



3rd September 2011

Photo: DSCF2345C



3rd September 2011

Photo: DSCF2346

Nymans NT Gardens



4th September 2011

Photo: DSCF2348

Steam Nostalgia on the Bluebell Line



4th September 2011

Photo: DSCF2349

We travelled from Sheffield Park to Kingscote



4th September 2011

Photo: DSCF2350

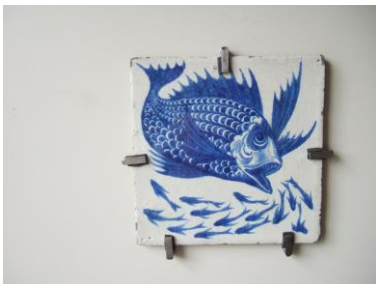
Mick Wheat on the footplate



4th September 2011

Photo: DSCF2353

Standen (NT) of the Arts and Crafts period,



4th September 2011

Photo: DSCF2354

William de Morgan Fish tile



4th September 2011

Photo: DSCF2355

Fish Panel



4th September 2011

Photo: DSCF2356

Ruby lustre two-handled fish vase



4th September 2011

Photo: DSCF2357

Double gourd shaped long neck vase



4th September 2011

Photo: DSCF2360

Ruby lustre vase with net pattern



4th September 2011

Photo: DSCF2361

Ruby lustre fish punch bowl



4th September 2011

Photo: DSCF2365

William Morris wallpaper pattern



4th September 2011

Photo: DSCF2367

William Morris wallpaper pattern



4th September 2011

Photo: DSCF2375



4th September 2011

Photo: DSCF2376



4th September 2011

Photo: DSCF2377



4th September 2011

Photo: DSCF2378



4th September 2011

Photo: DSCF2379



4th September 2011

Photo: DSCF2381

The new-fangled crystal radio



4th September 2011

Photo: DSCF2383



4th September 2011

Photo: DSCF2384

### Webb fireplace



4th September 2011

Photo: DSCF2385



4th September 2011

Photo: DSCF2387



4th September 2011

Photo: DSCF2388



5th September 2011

Photo: DSCF2392

### Chaucer at Kelmscott House

| <b>NSNTA Committee 2021-2022</b>                                                     |                                                                               |
|--------------------------------------------------------------------------------------|-------------------------------------------------------------------------------|
| <b>Ralph White</b><br>Chairman<br>ralph@ralphwhitedesign.com                         | Thyme Cottage, 20 Upper Green, Wolverhampton<br>WV6 8QH<br>01902 752833       |
| <b>Rose Wheat</b><br>Vice-chairman and Talks Organiser<br>rose.wheat@virginmedia.com | 12 West Avenue<br>Newcastle ST5 0NB<br>01782 616113                           |
| <b>Richard Adams</b><br>Secretary and Membership Secretary<br>rjadams@doctors.org.uk | 79 Whitmore Road<br>Newcastle ST5 3LZ<br>01782 637183                         |
| <b>Huw Davies</b><br>Treasurer<br>huws.family@gmail.com                              | 2 Vicarage Crescent<br>Newcastle ST5 1NJ<br>01782 710952                      |
| <b>Marion Lycett</b><br>Programme Coordinator<br>marionlycett@hotmail.com            | Millstone House, The Green, Bagnall<br>Stoke-on-Trent ST9 9JR<br>01782 502919 |
| <b>John Spriggs</b><br>Newsletter and Website<br>newsletter@northstaffsnt.org.uk     | Rose Villa, Bowers Bent<br>Standon, Stafford ST21 6SG<br>01782 791360         |
| <b>Roger Cartlidge</b><br>rogandshirl@hotmail.co.uk                                  | 3 The Mount, Scholar Green<br>Stoke-on-Trent ST7 3HY<br>01782 777513          |
| <b>Cynthia Dumbelton</b><br>dumbeltoncynthia@gmail.com                               | 32 The Lea<br>Stoke-on-Trent ST4 8DY<br>01782 641765                          |
| <b>Jane Mayer</b><br>janemayeruk@yahoo.co.uk                                         | 16 Shaldon Avenue, Stockton Brook<br>Stoke-on-Trent ST9 9PU<br>01782 533476   |
| <b>Sue Till</b><br>st.till@icloud.com                                                | 9 St. Vincent Mews, Meaford,<br>Stone, Staffs ST15 8GW<br>01785 811794        |
| <b>Bob Winter</b><br>robert.winter14@btinternet.com                                  | 15 Robinson Road<br>Stoke-on-Trent ST4 8ED<br>01782 642942                    |
| <b>NSNTA Archivist</b>                                                               |                                                                               |
| <b>Kay Williams</b><br>williakay@gmail.com                                           | 3 The Spinney, Madeley Heath, Crewe, CW3 9TB.<br>01782 751018                 |

## Summary of Programme Winter - Spring 2022

| <b>January</b>              |                                                                              |
|-----------------------------|------------------------------------------------------------------------------|
| Tuesday 18 <sup>th</sup>    | Talk: Bob Kermeen - Soraya Empress of Iran                                   |
| Wednesday 26 <sup>th</sup>  | Car Trip and Walk: Etruria, Industrial Museum, history of the Shirley family |
| <b>February</b>             |                                                                              |
| Thursday 3 <sup>rd</sup>    | Walk: The Rum Tum Tardy Um Walk, Caverswall                                  |
| Tuesday 15 <sup>th</sup>    | Talk: Henry Birks - The Forgotten Artists of North Staffordshire             |
| <b>March</b>                |                                                                              |
| Tuesday 15 <sup>h</sup>     | Talk: Kath Reynolds - The Famous Folk of Stoke                               |
| Thursday 17 <sup>th</sup>   | Car Trip: with Guided tour of Sandon Church, churchyard & bell tower         |
| <b>April</b>                |                                                                              |
| Sunday 3 <sup>rd</sup>      | Walk: Apedale Country Park                                                   |
| Tuesday 19 <sup>th</sup>    | Talk: David Skillen - 'Five Years in 50 Minutes- the American Civil War'.    |
| Thursday 28 <sup>th</sup>   | Car Trip: Staffordshire Wildlife Centre with a 2 hour guided tour            |
| <b>May</b>                  |                                                                              |
| Wednesday 4 <sup>th</sup>   | Coach Trip: Coventry Transport Museum and Cathedrals                         |
| Sun 15th - Thu 19th         | Coach trip: Association Scottish Holiday                                     |
| <b>Dates for your Diary</b> |                                                                              |
| 24 <sup>th</sup> May        | AGM and Talk                                                                 |
| 22 <sup>nd</sup> June       | RHS Bridgewater Garden in Salford                                            |
| 7 <sup>th</sup> July        | Car Trip: Evening canal cruise with fish and chip supper                     |
| 19 <sup>th</sup> July       | Coach Trip: Boughton House, Kettering, Northants                             |

*This Newsletter (along with previous editions) is available on the website.*