

North Staffordshire Association
of
National Trust Members
Newsletter 85
and
January to April 2010 Programme



After a good walk what better than a good lunch at The Star, Copmere - see page 9

ON PAGE 10

**SEE ADVANCE INFORMATION ON A
WEEKEND HOLIDAY IN OCTOBER**

ON PAGE 20

**ADVANCE INFORMATION ON OUR
ANNIVERSARY CELEBRATIONS IN JUNE**

ARRANGEMENTS FOR TRIPS

Coaches depart promptly from SCHOOL STREET, Newcastle, behind the Swimming Baths. Nearby long-stay parking. Should a member cancel their booking it is regretted that reimbursement is only possible if there is a waiting list. There will be a £2 per cheque handling charge. Members are requested not to find their own replacement. Non-members taking part in coach outings pay an additional £2. The committee has agreed that it is only fair that members should have priority when booking trips and holidays.

Members are asked to note that it is not possible for the coach to stop at places other than School Street to pick people up or drop them off on the outward or return journeys. The coach will not wait for members who are late, either at School Street or at other pick up points. Members are advised to take careful note of when or where they will be picked up. Anyone missing a coach will have no claim on the Association.

Cheques to be made payable to the “**N. Staffs. Association of NT Members**”. Due to current banking procedure, please note that cheques are not cleared until after an event. Members are asked to write a separate cheque for each event they book. **Note:** The committee does not consider it proper that an event should incur a loss and therefore reserves the right to cancel should there be insufficient support.

For Your Safety and Enjoyment

Please look carefully at what is involved in an outing or a holiday before booking. Consider the starting time, the length of the day, the amount of walking and stair-climbing involved, the number of times of getting on and off a coach, etc. so that you can enjoy the day to the full by being able to participate in all aspects of the outing. **If you have a problem with mobility or hearing, for example, please let the organiser know as soon as possible and we will try to arrange some help but we cannot guarantee to do so.**

If you have not received acknowledgement of a booking within two weeks, please enquire as we believe that some bookings have recently gone astray in the post.

Supporters for Trips

Our coach trip organisers need sometimes to be in two places at once. We hope for each trip that there will be a supporter who can help them by perhaps collecting tickets or escorting people to entrances.

All our trips this summer need a volunteer supporter. Please help if you can - speak to the trip organiser when making your booking.

North Staffordshire Association of National Trust Members

NEWSLETTER No. 85

December 2009

and January 2010 to April 2010 PROGRAMME

A NOTE FROM THE CHAIR:

2010 will be a significant year for the Association, chiefly because we will be celebrating our 30th Anniversary. In those years a large amount of money has been raised to hand over to the National Trust for various projects; some has been donated for specific purchases at properties, many of which we have visited, while other donations have been made to large appeals such as for the purchase of many acres of Snowdonia or for Tyntesfield. We have also contributed to the purchase of areas of coastline under the Neptune Appeal, which guarantees coastal areas to be kept free from commercial development or private restrictions on visiting.

To recognise the importance of what we have done, we are arranging an afternoon of events at Audlem, which Drs Angela and Alun Davies have planned. Those members who have been in the Association since the early years will remember that they organised the celebrations for the 10th Anniversary at Attingham Park, a day which is often recalled with pride and affection by those present, as four coaches arrived at the property and rides round the estate and an afternoon tea were much enjoyed. We have decided this time to acknowledge the importance of the countryside to us all and the work the Trust is doing to protect rural areas and the way of life, which is why we are offering a varied programme of events in the lovely area of Audlem. Please put the important date of June 22nd on your calendars.

Another point to note is that from January all talks will begin at 7.30pm, unless otherwise stated. We hope that this will please members and allow for speakers to travel some distance but especially for members attending the talks to stay for a while afterwards to enjoy the social part of the evening. A large majority of those present at the October and November talks voted for this change.

There will also be the usual programme of outings and events and I look forward to enjoying the coming year with many of you at some of these.

A Happy New Year and best wishes for 2010

Anne Anderton

Dinner Lady (or Gent) Needed!

The Association is very grateful to Mary Malcolm for establishing The Luncheon Club with lunches in Spring and Autumn as a successful and enjoyable part of our programme of events.



Now she wishes to step back from the task and we need someone to take over this role. Very little is required from the organiser (no committee meetings or paperwork) only the research needed to find and test venues - not exactly a hardship!

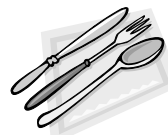
If you feel you can contribute to the running of an important social aspect of the Association, please contact anyone on the committee, or Mary herself. She will advise on how to deal with the task.

SUBSCRIPTIONS

To meet increased costs of printing and of hiring the Conference Centre the Committee regrets that subscriptions will have to go up by 50p. This is the first increase for some time and we believe that this will still represent good value to our members. The rise was agreed at the AGM and deferred as long as possible.

LUNCHEON CLUB MEETINGS

Look out for the lunches in this programme.



NEWS FROM LOCAL PROPERTIES

LITTLE MORETON HALL



has had a busy season this year, perhaps benefiting from the cost of European holidays but whatever the cause, visitor numbers are up on last year and on budget. As with such times the Hall has had a lovely atmosphere, the guided tours remain very popular and busy, our new Conservation in Action volunteer team

have been helping visitors understand how we care for the property, while our garden guides have been doing something similar for the knot garden and orchard. One really major success has been the link developed with Carter House in Congleton to produce a community arts project at the Hall. Local artist Penny Beautiman facilitated the workshop with the adults from Carter House to produce a mixed media collage focusing on the design and craftsmanship of the Hall. Alison Davidson, our Supporter Development Officer has been working with local community groups to forge new links and we are actively planning a new project with Carter House as this goes to print.

David Watts wrote this for us in October

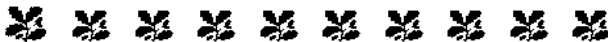
BIDDULPH GRANGE GARDENS



Editor's note - By the time you receive this, most of the information

from Paul Baker's Newsletter from **Biddulph Grange** will be out of date. However, the difficulties in cutting my own hedge recently prompt me to include this article and picture from Paul on hedge cutting. Remember Paul has offered to send this to members who are interested AND have an email address. Please write to biddulphgrange@nationaltrust.org.uk with Newsletter as your message title and he will

add you to his distribution list.



Hedge Cutting

With the advent of some glorious weather the precision hedge cutting along the dahlia walk has been in full swing. The hedges along the dahlia walk and surrounding the flower parterres are cut to a carefully calculated blueprint which the gardening team have to follow to a millimetre and no two hedges have the same measurements. On average to cut all the hedges in the garden takes the entire gardening team 6 weeks and this can only be achieved if the weather stays dry for every day of the cutting season.



The yew clippings are then gathered up and collected to be turned into anti-cancer drugs used to treat breast and ovarian cancers.

Cutting our hedges involves using cherry pickers, ladders, special long handled cutters, measuring poles and string!



REPORTS ON RECENT TALKS AND VISITS

Wednesday 8th July. Coach Outing to Madresfield Court and Malvern.

In the morning we explored Malvern. The town's handsome buildings slope steeply up the side of the Malvern Hills, the 900 year old Priory church among the highest. Inside the church is the 15th century stained glass window and two richly coloured modern windows which appear abstract at first, but gradually images emerge - a stag, human figures. On the two double rows of choir seats there are entertaining carved misericords, grotesque beings, farm animals, people with their tools, mythological figures.

After a look at many fine shops and lunch, the coach took us to Madresfield, home since medieval times of the Lygon family as it evolved, from time to time overcoming the lack of male heirs by judicious marriages and name

changing. Approaching the house across the moats you see the older, irregularly shaped brick built part of the house on the left. The right hand (Gothic style) side was built in the Victorian era. The Lygon family in its successive incarnations has lived here continuously.

The tour, charmingly and knowledgeably guided, took place in the newer half of the building. The family emblems, swan, lion and bear, are in evidence as staircase newel posts and elsewhere.

Carved wood and family portraits predominate. A big inheritance following a lengthy case in Chancery (which may have given Dickens the idea for Jarndyce and Jarndyce in *Bleak House*.) led to lavish collecting and furniture buying. One portrait, thought to be of Anne Boleyn, was re-dated as later by a visiting group of costume specialists; the style of dress in the picture was too late for Boleyn.

The small chapel is lavishly painted with figures and wild flowers, all of which had been found on the estate at various seasons.. Evelyn Waugh stayed frequently with the family, often wrote while he was there, and is thought to have used the house as the basis for *Brideshead* in his novel.

The impression is of a lived-in house, heaps of books everywhere, not only in the library, where the bookends had low relief carvings; there was much evidence of family interest, and proficiency, in crafts.

Georgina Pritchard

Thursday 16th July Car Outing to Cholmondeley Castle, Malpas, Cheshire

The road to Cholmondeley was marked by posters advertising a “Pageant of Power”. No title could have been more appropriate for our visit, even though the pageant in question concerned the racing of vintage cars. In the Chapel of St. Nicholas, our guide introduced us to the descendants of those warlike Norman ancestors who took their curious name from a Saxon holding. Their descendants became courtiers, with mixed success. In the words of our guide, their story was marked by “strokes of luck”, crowned in 1791 by a fortunate marriage, conferring upon the family the hereditary office of Lord Great Chamberlain of England, a post held today by the 7th marquis.

When the first marquis planned the construction of a picturesque castle in the style of the gothic revival, remnants of the earlier dwellings, masonry and decor, were transferred to his new creation. The highly decorated interiors,

pointed windows, draperies, furnishings, display the original style of the 1800s, now reclaimed by the 6th marquis and his wife from Victorian alterations. Restricted space forbids any wide-ranging narrative of the fascinating tour we made, but there was an abundance of quality and variety, in the family portraits with their changing fashions, the Matthew Boulton metalwork on the staircase, the Gericault study of horses, the gilded grapes on the dining-room ceiling, the range of textiles from Brussels tapestries to Colefax and Fowler fabrics, or the Blue John urns on the mantelpieces.

Yet the house has not been allowed to slumber undisturbed as a family home. The very dining-room we came to admire once served as a military hospital, and a recent visit by a former patient, now aged 93, had been a moving occasion for the household, when he sat down at the same piano to play some old favourites.

So short a time to see so much, but our thanks go to all who helped to make the day so successful.

Peggy Chaplin

Monday 10th August Car Outing to Bethesda Chapel, Hanley

The rise of Methodism in the Potteries, started with the rise of the population due to an increase in pottery manufacture. Many people felt the Established Church was far removed from their everyday lives and Methodism seemed more of a Christian way. The first Methodist preaching in the Potteries was around 1757 in Burslem and a house was registered there for worship in 1759. In Hanley the Methodists met in John Meigh's house. After John Wesley's death in 1791, a split occurred in Methodism .

John Meigh along with Job Ridgeway, Alexander Kilham and William Smith bought a coach-house for their services on the site, soon to become the Bethesda Chapel. Due to the popularity of these services the coach-house soon became too small and it was replaced in 1799 by the first Bethesda Chapel which had 600 rented seats. In 1811 the chapel was extended to seat 1000. Six years later the congregation had grown once again and the chapel was completely rebuilt. The new building was 110 feet long and 69 feet wide, (the main horizontal wooden beams are in one piece and had to be specially imported from America and are of Canadian redwood and are very special), a

gallery was added supported on 24 cast iron columns. Of note is the rounded apse, unusual for a non-conformist chapel! Now it can seat upwards of 2600. Below the chapel is a vault where the Ridgeway and Meigh families are interred along with ministers and noted preachers. In 1820 an organ was installed. As the Chapel's stature grew, in 1856 a new pulpit and communion rails were added, windows altered and a new organ installed. In 1859 the frontage was remodelled with a grand Corinthian portico. Final alterations in 1887 were carried out producing the building we know today. The Bethesda Chapel closed in 1985 but still had a congregation of 150.

It was sold to a developer and for 20 years lay derelict! In 2002, The Historic Chapels Trust became the owners and has been very successful in publicizing the chapel's plight. The project to repair Bethesda received national coverage in the BBC series 'Restoration' and grants from the Lottery Fund, English Heritage and many others and has spent £900,000 on restoration so far although the target is £2.5 million. When it is completed they wish it to be utilized for concerts, exhibitions, lectures etc! We wish them well.

Barry & Hilary Shufflebotham

Wednesday 9th September Car Outing to Sudbury Hall, Derbyshire: "Behind the Scenes"

On a lovely sunny day approximately 25 members gathered together at the front of Sudbury Hall. We met Michael our guide and Graham who ensured no one was left behind during the tour. Michael told us the history of the Vernon family who lived at Sudbury until it passed into the care of the National Trust in 1967.

George Vernon began building the house in 1659 soon after he inherited the estate. He demolished the existing Manor House which stood further to the West. It was five years before it was habitable, eight years to completion and thirty years before all the decoration was finished. It seems he designed the house himself and



Detail from the Plasticine Garden on display at Sudbury

was very 'hands-on', involving himself in every aspect and keeping very detailed accounts.

An addition to the original 'E' shaped symmetrical house was made in Victorian times to provide extra bedrooms. The entrance passage divides the Great Hall and principal state rooms on the right from the smaller family rooms to the left. Interior decoration was done in several phases, the first using local craftsmen and finally using more fashionable London men, each phase more ornate. There is an abundance of beautiful carving, including one example of Grinling Gibbons' work.

We were taken up to the servants' bedrooms in the attic. Small rooms, some for one person others for two and one large room for the Butler and Housekeeper, who were usually a married couple. Rooms for one were just big enough for a bed, table and a hook for hanging up the uniform. We moved down to the last used kitchen and further down to the beer cellar. You get a clear idea of what life must have been like for the family and their servants; the Vernons, we were told, were good employers. Sudbury Hall is well worth a visit along with the gardens, church and Museum of Childhood.

Thanks once again to Peter Moxon for arranging a visit with a difference.

Saturday 26th September Walk: "Cop Mere and Jackson's Marsh"

'Fresh Air, Excellent Views and Great Grub'

I was feeling brave today, not only had I left my jumper in the car but also the trusty waterproofs that had been so useful over the past couple of months. The sun may not have been beating down but the air was warm and patches of blue sky were visible in the distance.

Richard led the way across the lane into the picturesque countryside surrounding Eccleshall. I brought up the rear along with my Mum and Dad; he was doing a great job as the DayGlo back marker.

There were various points of interest as we rambled along, my particular favourite was Walk Mill which dated back to the 18th century and remained open until the 1950s. Tragically a ferocious storm in 1976 demolished part of the building and it remains in a state of disrepair to this day.

The walk contained not only excellent views but wildlife and animals alike from migrating frogs, birds of prey, to piglets and three four legged friends who accompanied their owners on the walk.

After crossing fields, quaint lanes, woodland tracks and ancient marshlands at around one o'clock we began the descent to The Star Inn which was great, as by this time I felt I had earned my lunch. (See picture on front cover.)

As usual an excellent walk enjoyed by all. Richard, until the next time, thank you.

Raynor Pearce

Wednesday 14th October Talk at the NS Conference Centre by David Day: 'A Modern Naiad': Nineteenth Century Female Professional Natationists.

The subject of the talk was intriguing in itself and as soon as Dave Day began to unfold the story of the Beckwith sisters, their family and other 'natationists', it became clear that he had been fascinated by this topic for many years and had researched it thoroughly. Through the medium of drawings, postcards, leaflets and a few photographs, we followed Agnes and her sister, Lizzie, from childhood to maturity and learned of their swimming exploits. They earned their living giving exhibitions of 'ornamental' swimming, often in public baths but also in large glass tanks on stages throughout Britain and Europe, and they swam in competitions and races as well as teaching many women to swim. By undertaking endurance swims of many miles in the Thames, the Channel and even off New York, they proved that women had strength and stamina and in their fetching costumes they drew large audiences, especially of men!

We were entertained by newspaper accounts of some of their accomplishments, such as smoking, eating sponge cake under water, or stepping out of the Thames at Greenwich as fresh as daisies after swimming from Putney – at a time when the river was still heavily polluted.

This was an unusual and thoroughly entertaining talk.

OUR LONDON - A P

15th - 18th O

Once again the Dumbeltons are planning a London four-day holiday. Here are a few comments from the previous holiday they arranged in 2007:

"Thank you very much for organising such an interesting weekend in the 'Shadow of the Gherkin'. We really enjoyed every part of the visit to London and appreciate the effort you put in to ensure everything ran like clockwork, and we had a varied and interesting itinerary. ..." David and Linda Perry

"... you combined such a good collection of venues to visit, ..."
 Myra Okey

"... the arrangements and choice of venues was brilliant and if left to our own devices we could not have seen and appreciated so much in such a short time." Joan Sefton

Following the success of this earlier London holiday, they have followed up requests from members and now present another offering. This time it will be based in a quality hotel in the centre and offers a mixed bag of venues they themselves find interesting and want to share with you. It will be a full programme visiting varied places which they hope you will find attractive.

This is not an ordinary London holiday - this is a Dumbelton London holiday! Some of the delights on offer include historic buildings, a popular market, famous London pubs, and a mediaeval barn.

To receive a detailed programme (available mid-January) please send
 Cynthia & David Dumbelton, 32 The Lea, Trentham, ST4 8DY



Ti

Bi

ING THE
 LIDAY - AUTUMN 2010
 h Bakers Holidays

PERSONAL JOURNEY

CTOBER 2010



me to
 see
 g Ben

Discover a different London!

This time on offer is a new personal selection of varied and intriguing attractions in London and surrounds - an action-packed four day holiday to delight you. Note: this is an energetic holiday!

Proposed highlights include:

- * **Strawberry Hill - Walpole's restored "Gothic" villa**
 - * **Eltham Palace (EH) - 1930's home of the Courtaulds**
 - * **The Red House (NT) - built for William Morris**
 - * **Ragged School Museum - Barnardo's first free school**
 - * **Dinner at an historic pub**
 - * **Tour of the Houses of Parliament**
 - * **Olympic site - get up close and personal**
- and even more! (subject to confirmation)

Easy payments will be available for this holiday, to ease the pressure on your purse.

Cynthia and David are also members of the Staffordshire Centre group of National Trust members and, as that group has no holiday planned for next autumn, the coach holiday will also be offered to them. Take up of this holiday is likely to be keen. For more information, please see below.

l a stamped addressed large envelope (A5 size) to:

Tel: 01782 641765, email: cynthia_dumbelton@yahoo.co.uk

Wednesday 28th October, Coach Outing to the Church and Friary of Saint Francis and Dunham Massey (NT).

As we arrived at Gorton we saw this amazing ‘cathedral-like’ building rising out of a nearly empty landscape. The story of how the Friary originally came into being was described to us by Tony Hurley, a man who came to give advice for a day, and stayed thereafter. In 1861 seven Franciscan Friars from the continent felt called to Gorton to minister to a small Roman Catholic congregation of 300 souls. With them also came a lay brother from Ireland. This brother single-handedly built and raised funds for the first Friary, and later the magnificent church, designed by E.W. Pugin. Unusually this was sited North to South in order that it could dominate the skyline from the city of Manchester below to emphasise that Catholic friars were back on English soil. This siting also enabled important features of the church, such as the massive crucifix and the niches of the saints, to be lit up by the rising and the setting sun at various crucial dates in the Christian calendar. The Friary flourished from the 1860’s to 1970. However, with heavy industry failing, leading to large scale demolitions and the dispersal of what had become a numerous congregation, the Friars left in 1989. The church fell into disrepair and became the target for vandals. Through the heroic efforts of the Preservation Trust set up by a group of volunteers in 1996 the church building has been saved, and a gradual restoration of much of the original friary begun. With backing from various sources it now earns its keep by hosting corporate events, concerts, weddings, etc., which in turn enable the Trust to also serve the needs of the present local community through projects in education, training, craft, art and health. As Tony Hurley said: “It has become the headquarters for a modern-day crusade.”

In the afternoon we went to Dunham Massey, where we first climbed up to the servants quarters to be given an interesting insight into the life ‘below stairs’ by Dr. Pamela Sambrook, drawn from research for her book ‘A Country House at Work- Three Centuries of Dunham Massey’. After the talk we were allocated set times to tour this elegant Georgian house, and also to enjoy the beautiful grounds. We were blessed with good weather throughout the day, and also enjoyed delicious soup, sandwiches and cake for lunch at Gorton, and took ourselves to afternoon tea in Dunham Massey. It was altogether a splendid outing, excellently organised by Peter Thompson and by his wife Anne.

Tuesday 3rd November Talk by David Fletcher: 'Life on an Antarctic Station'

David Fletcher joined the British Antarctic Survey and first went "South" in the 1970s as a dog sledge driver. During the next 30 years he has spent many seasons there as a station commander. He was, therefore, uniquely placed to guide us through a year in the life of an Antarctic station, excellently illustrated by some superb slides. We saw the hardware of the base: generators, aircraft to take the scientists deeper into the Great White Continent and earth moving machinery. Although many of us probably knew of some of the scientific work done by the BAS, few of us had appreciated the "back up" teams of mechanics, carpenters and, above all, the cook who have to

keep a base running in the most hostile and cold environment on earth without outside help other than the yearly supply ship.



The Winter Solstice and the arrival of the first sun after several months of total

darkness were both celebrated with amazing feasts, great parties and some really silly escapades. It was fascinating to hear of the great changes which have occurred in Antarctic exploration in our lifetime :the change from dog sleds to motorised traffic, from Morse-code to e-mails and computers and the use of aeroplanes; from the world of Shackleton and Scott to the world of the 21st century from someone who had directly experienced them all.

The excellent delivery of the speaker and the fascinating subject of the talk provoked a number of lively and interesting questions ranging from the impact of tourism in the Antarctic to the future of the Antarctic Treaty.



David left us with much to ponder as he set out on his next adventure: to navigate the M6 safely home to Ledbury.

SPRING PROGRAMME 2010

**Tuesday 12th January North Staffs Conference Centre
7.30pm - Please Note New Starting Time**

Randle Knight: The William Salt Library

The name of William Salt is usually now abbreviated to simply 'Salt' as the Salt Library is well known and much used and appreciated by anyone interested in any aspect of Staffordshire history. It provides an important source of documents, books and paintings – but why did William Salt, a London banker and a collector of 'briefs', make his collection? Randle Knight, who is a Trustee of the library and was also long associated with the North Staffordshire Field Club, has published a history of the library and Salt himself and he will provide us with a detailed and well-illustrated account of both. He works as a volunteer at the Library and has researched this subject over many years so he has an authoritative and interesting story to tell.



Tuesday 19th January 12.30 For 1.00pm Luncheon Club Meeting: The Badger Inn Eccleshall (A519 Newport Road) Max 20

This Free House has an airy and modern dining area. Choose from Steak Pie/ Fish & Chips/ Chicken Supreme and Crème Brulee (v.good!) or Lemon Tart with berries. Coffee included.
£12.00

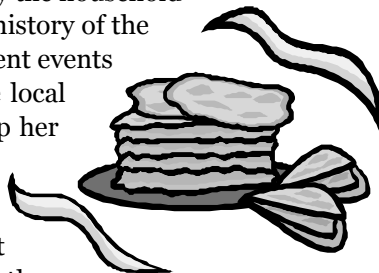


Please book by phone before Jan 12th giving your choice of menu, name and phone number to Mary Malcolm – 01782 613451

**Wednesday 10th February North Staffs Conference
Centre 7.30pm - Please Note New Starting Time**

Pamela Sambrook: The History Of The Oatcake.

Dr Sambrook is well-known to many of us and she has written several books for the National Trust, chiefly about the work of servants and about life below stairs. Those who went to Dunham Massey in October last year will remember the interesting talk she gave there about the way the household was organised. She has been interested in the history of the oatcake as a staple food for many years and recent events which seemed to threaten the closure of some local oatcake shops provided the stimulus to develop her research and write a book on the subject of this local speciality.



We shall hear and see in her illustrated talk that some of the myths surrounding the origins of the oatcake are not supported by evidence, while it will also become clear that the simple food has a much longer history than many would imagine. Unfortunately we cannot offer an oatcake supper after the talk, but people may well be inspired to reconsider the delights of this simple but filling fare!

**Friday 19th February. 2.30 - 5.00pm Car outing to
Lichfield Cathedral.**

Lichfield is the only medieval Cathedral in Britain with three spires and is a dramatic symbol of the Trinity. The Cathedral has been a centre of Christian worship for over 1300 years, a place of pilgrimage, history and prayer.

The Cathedral tour starts at 2.30pm from the west (main) door and will take in the Shrine of St Chad, the Lady Chapel, the North Choir Aisle, the Chapter House, the North Aisle and Transept, the Pedilavium, the South Choir Aisle, St. Chad's Head Chapel, the Presbytery, the Crossing, the Nave, the Consistory Court, the Quire, the South Transept and the West End.

Members should be physically able to undertake the tour which will be on foot and will last about one and a half hours. The risk assessment is that the Cathedral Tours are considered to be minimal risk.

After the tour afternoon tea will be served in the College Hall at approximately 4.00pm.



Please allow an hour and a half to travel to Lichfield, park your car and walk to the Cathedral. The Cathedral itself does not have a car park but car parks within walking distance are situated in Shaw Lane, Bird Street and Lombard Street.

For those who are interested Choral Evensong is held at 5.30pm.

Lichfield is a beautiful city so why don't you make a day of it and arrive in the morning to sightsee, have lunch and perhaps do a little window shopping. Attractions close to the Cathedral are: the Erasmus Darwin House, Stowe Pool and St Chad's Church which are all worth a visit.

Please meet at the Cathedral west door at 2.30pm.

The cost will be £10 which includes the tour and afternoon tea.

Please apply to Peter Thompson, Westerly, 220 Seabridge Lane, Newcastle under Lyme, Staffs ST5 3LS Telephone 613397 enclosing a cheque and a stamped addressed envelope.

Closing date for applications: Monday 1st February

Wednesday 24th February 12.30 For 1.00pm Luncheon Club Meeting: Toby Carvery Longton Road Trentham (Look For Stag Statue) Max 20

A return visit to this popular carvery. £5.00 main; puddings £3.20

Please book by phone before Feb 17th giving your name and phone number to Mary Malcolm – 01782 613451



Sunday 7th March 2010. Walk "Wybunbury and Hough"

Spring is coming and it's time to get the walking boots out again for some fresh air and gentle exercise. This walk is about 6 miles in total and will suit most people. There are no hills to speak of, and only about a dozen stiles to climb - this being Cheshire, a lot of stiles have been replaced by modern kissing-gates. Well-behaved dogs and children are most welcome.

We will meet at the Swan Inn, Wybunbury, near Nantwich at 10.30am, and aim to be back there for lunch at our reserved tables at 1pm. We head off through the churchyard on a footpath paved with recycled gravestones, across farmland towards the village of Hough. Ahead of us are distant views of Mow Cop; then as we return to Wybunbury, the church tower guides us in. A short diversion takes us through Wybunbury Moss, a National Nature reserve and SSSI. This is one of just three floating mosses in the UK, and in some places the peat moss is lying over 9 metres of hidden lake. General public access to parts of the site was only opened in 2009, and the majority of the area remains out of bounds.

Cost £2 for members, £2.50 for guests (pay on the day).

Apply to Richard Adams, Gables End, Holly Bank, Stoke-on-Trent ST4 8FT. Tel 01782 646054.



Please enclose a stamped self-addressed envelope.

Tuesday 9th March North Staffs Conference Centre 7.30pm - Please Note New Starting Time

Shaun Farrelly: The First Transatlantic Telephone Cable

Shaun Farrelly is a retired BT engineer from Yarnfield and he will outline the circumstances which led to the initial attempts to connect Europe and the USA by means of a telegraph cable. We shall hear about the problems encountered, and despite the failure of the first attempt a cable was successfully laid at a later date by the 'Great Eastern' ship, built by Isambard Kingdom Brunel. The illustrated presentation will describe the activities of some of the Victorian entrepreneurs and engineers involved in the project, and enlighten us – in a non-technical way – about an amazing achievement, which is perhaps not as well known as it should be.

Wednesday 24th March, Coach Outing to Derby Art Gallery, Derby Cathedral and Pickford's House.

In the morning we shall be visiting Derby Art Gallery where members will have the opportunity to take a self-guided tour of its exhibits before gathering in the Joseph Wright gallery for an authoritative short talk on this world class collection of his paintings.

We shall then walk the short distance (approx. 5 minutes) through the pedestrianized streets to the beautiful Cathedral Church of All Saints with its sixteenth century tower and porch married to an eighteenth century classical church. There will be time to admire the spectacular interior with its wrought iron screen extending across the whole width of the church, the white and golden canopy over the High Altar and the fine, modern stained glass windows. Visit the elaborate monument to Bess of Hardwick, designed and built under her supervision before her death and the Consistory Court, first used in 1643, where ecclesiastical and municipal legal matters would have been heard.

A lunch of sandwiches, cake and hot or cold drink will be taken in the Cathedral Centre opposite the Cathedral's west end and afterwards we shall continue by coach to Pickford's House, a delightful museum of Georgian life and historic costume and textiles. Members will again be free to explore the house themselves; the ground floor and lower ground floor, which contain the family rooms, are easily accessible but the two upper floors can only be reached by stairs and members should take this into consideration. Refreshments will be served from 3.45pm onwards before departure at 4.30pm.

Depart from School Street at 9.00am and return at approximately 6.00pm.

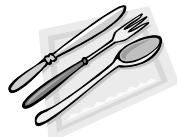
Cost: £19 to include coach fare, driver's gratuity, gallery talk, entrance to all venues, lunch at the Cathedral centre and refreshments at Pickford House.

Please apply to Rose Wheat, 12, West Avenue, Newcastle-under-Lyme, Staffs, ST5 0NB, Tel: 01782 616113 enclosing a cheque and a stamped addressed envelope.

Closing date for applications is Monday 8th March.

Thursday 25th March 12.30 For 1.00pm Luncheon Club Meeting: The Egerton Arms Astbury (A 34) Max 20

A return visit to this pretty village where we plan for St Mary's church to be open for a visit after lunch, possibly with a slide show and short talk.



Choose from Vegetable Soup/Garlic Mushrooms/Chicken Liver Pate. Roast Pork/Chicken Chasseur/ Salmon with Dill. Sundae/ Cheese and Biscuits/Chocolate Jaffa Sponge/Strawberry Cheesecake.
£12.95 Coffee £1.25

Please book by phone before March 18th giving your choices, name and phone number to Mary Malcolm 01782 613451

Thursday 29th April 1.00pm. Car Outing to Derby Sewage Treatment Works, Megaloughton Lane, Nr Raynesway, Derby.

A visit has been arranged for members to the Severn Trent Water Authority's new fully operational site at Derby when members will be offered an illustrated talk and a guided tour of the sewage treatment works where they will be able to see the processes used to clean sewage before returning it to the river.

The visit will last between two and three hours. Members will be required to wear hard hats and yellow vests provided by the STA and members should wear stout shoes.

Members should arrive not later than 1.00pm. Directions upon application. The sewage works lies about three miles off the A50.

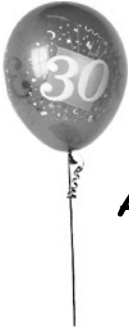


Cost £5 per member.

Apply to Peter Moxon, Millstone House, Butterton, Newcastle-under-Lyme, Staffs, ST5 4EB. Tel: 01782 616337 enclosing a cheque and a stamped addressed envelope.

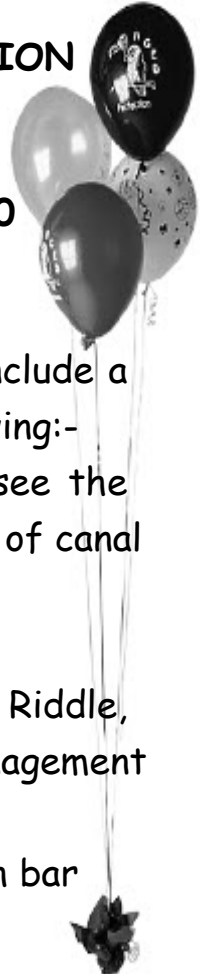
Closing date for applications is 31st March.

**NORTH STAFFORDSHIRE ASSOCIATION OF
NATIONAL TRUST MEMBERS
1980 - 2010**



**A 30TH BIRTHDAY CELEBRATION
IN THE COUNTRYSIDE**

TUESDAY JUNE 22ND 2010



The programme will be based in the attractive village of Audlem, and will include a choice of some or all parts of the following:-

- early afternoon guided visits to see the historic village, the amazing flight of canal locks or the ancient church
- afternoon tea with birthday cake
- talk by Land-use Director, David Riddle, about the Trust's policies and management of the countryside
- reception and 3-course dinner with bar

**FULL DETAILS AND BOOKING FORMS FOR THIS
GATHERING OF FRIENDS WILL BE IN THE NEXT
NEWSLETTER, BUT PLEASE PUT JUNE 22ND IN
YOUR DIARIES NOW!**

Summary of 2010 Spring Programme

Tuesday 12th January	Talk by Randle Knight on The William Salt Library
Tuesday 19th January	Luncheon Club meet at The Badger, Eccleshall
Wednesday 10th February	Talk by Pamela Sambrook on The Staffordshire Oatcake
Friday 19th February	Car Outing to Lichfield Cathedral
Wednesday 24th February	Luncheon Club meet at the Toby Carvery, Trentham
Sunday 7th March	Walk "Wybunbury and Hough
Tuesday 9th March	Talk by Shaun Farrelly on the First Transatlantic Telephone Cable
Wednesday 24th March	Coach Outing to Derby Art Gallery, Cathedral and Pickford's House
Thursday 25th March	Luncheon Club meet at The Egerton Arms, Astbury
Thursday 29th April	Car Outing to Derby Sewage Treatment

And Dates for Your Diary.....

Monday 10th May	Car Outing to Englesea Brook Chapel
Tuesday 11th May	AGM
Wednesday 2nd June	Car Outing to Shipton Hall
Tuesday 22nd June	Anniversary Celebrations
Wednesday 21st July	Car Outing to Macclesfield Silk Museum



COMMITTEE 2008 - 2009

CHAIRMAN

Anne Anderton

14, Berne Avenue, Newcastle ST5 2QJ 01782-613024

Penny Moore

26 Parkway, Trentham, Stoke on Trent ST4 8AG
01782-657645

HON. SECRETARY

Richard Adams (Rambles)

Gables End, Holly Bank, Stoke-on-Trent ST4 8FT.
01782-646054

Millstone House, Butterson, Newcastle ST5 4EB 01782-
616337

Peter Moxon

Bernice Mulliner (Minutes Secretary)
67 Chester Crescent, Newcastle ST5 3RR 01782-617211

Sue Pitt

HON. TREASURER

Madeleine Hopley

5 Sedbergh Close, Newcastle ST5 3JQ 01782-618821

196 Dimsdale Parade West ST5 8EA 01782-566871

Peter Thompson

'Westerly', 220 Seabridge Lane, Newcastle, Staffs, ST5 3LS
01782 613397

Andrey Andrey

10 Paris Avenue, Newcastle ST5 2RQ 01782-623214

Rose Wheat (Programme Organiser)

12 West Avenue, Newcastle, Staffs. ST5 ONB 01782 616113

John Beaumont (Newsletter Editor)

4 Barnsdale Close, Trentham, Stoke on Trent ST4 8TT
01782-642618 email ajbeaumont@talktalk.net

Keith Walker (Membership Secretary)

49 Stockwood Road, Newcastle ST5 3LQ 01782-613813